

Pit Stop Pilot Program Expansion

Controller's Office

Geospatial Analysis of Accessibility to Public Toilets



Objectives

- Provide a geospatial representation of where public toilets are currently located and areas where toilets can be added to provide more access in higher demand areas
- Provide recommendations for further Pit Stop Pilot Program analysis and expansion
- Provide cost comparison for public toilet resources and staffing



Pit Stop Pilot Program Pilot

- Began in July 2014 with a six-month pilot project that provided 3 portable toilets in the Tenderloin
 - Hours: Tuesday through Friday from 2:00-9:00 PM
 - Staff attendants provided by Clean City Coalition
- Program expanded to include a 2 more portable locations and 4 semi-permanent JCDecaux locations
 - Staffed by Clean City Coalition and HSA JOBSNOW
- Total of 9 locations



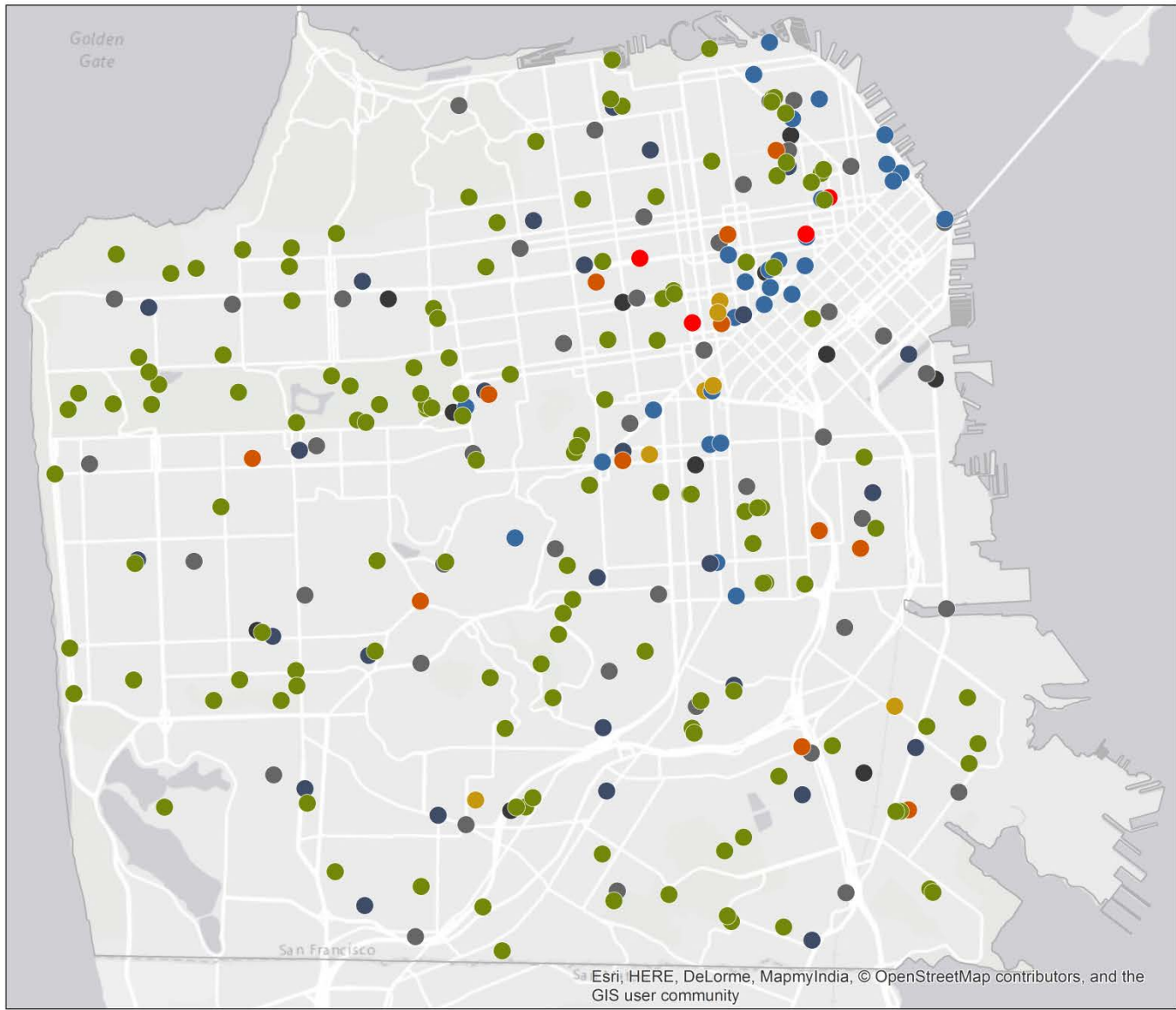
Types of Current Public Toilets

- Permanent
 - Recreation Centers
 - Parks
 - Libraries
 - Health Centers/Hospitals
 - Parking Garages
 - Police and Fire Stations
- Portable
 - Pit Stop Pilot Program
 - 5 locations
 - 4 future locations TBD
- Semi-permanent
 - JCDecaux
 - 25 locations
 - Public Works contract set to expire in January 2017



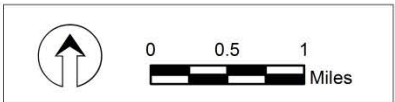
Geospatial Analysis





RESPONSIBLE DEPARTMENT

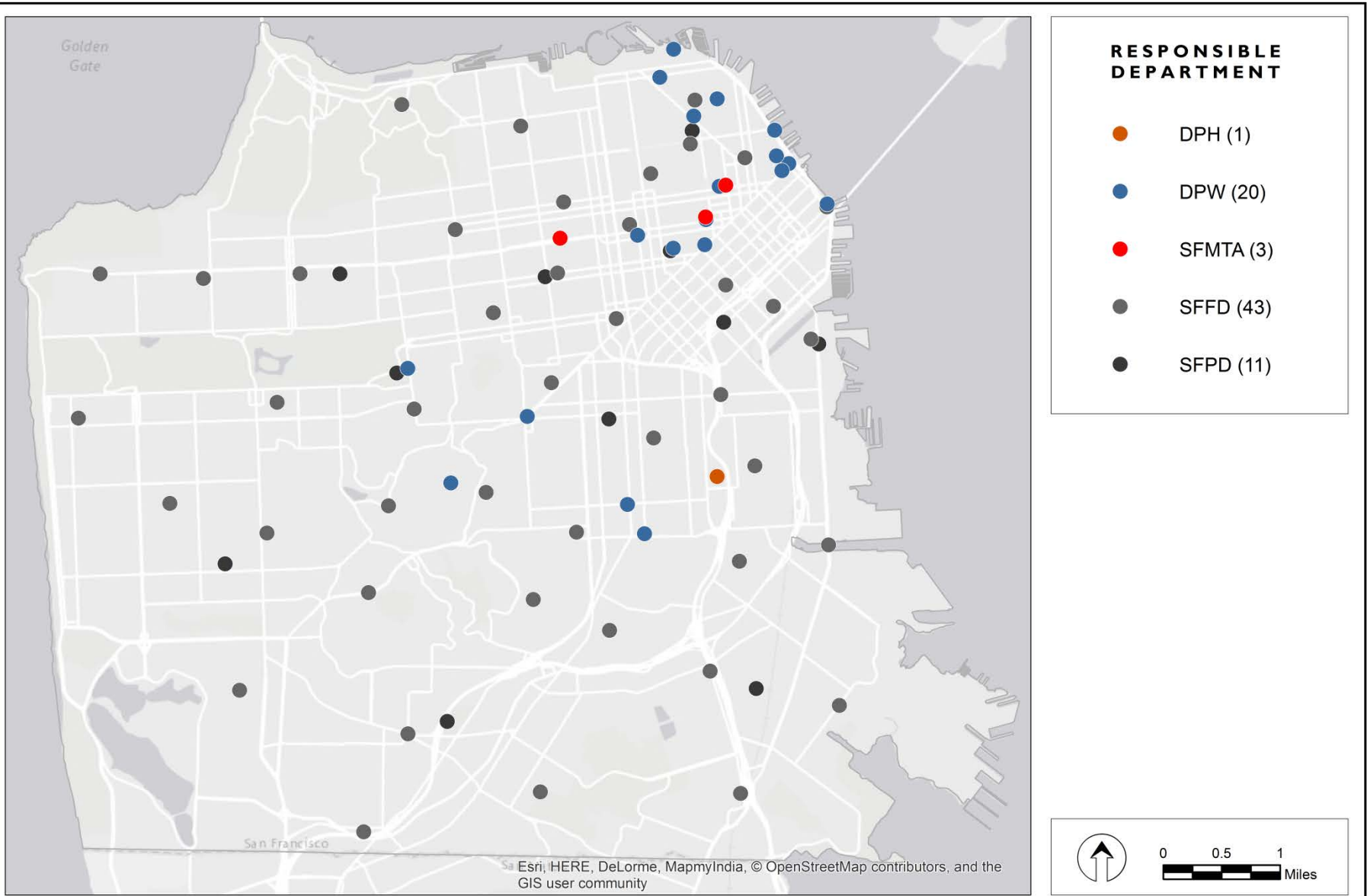
●	DPH (13)
●	DPW (30)
●	LIB (28)
●	REC (138)
●	SFMTA (4)
●	OTHER CCSF (7)
●	SFFD (43)
●	SFPD (11)



Sources: San Francisco Recreation & Parks Department, San Francisco Public Works

October 2015

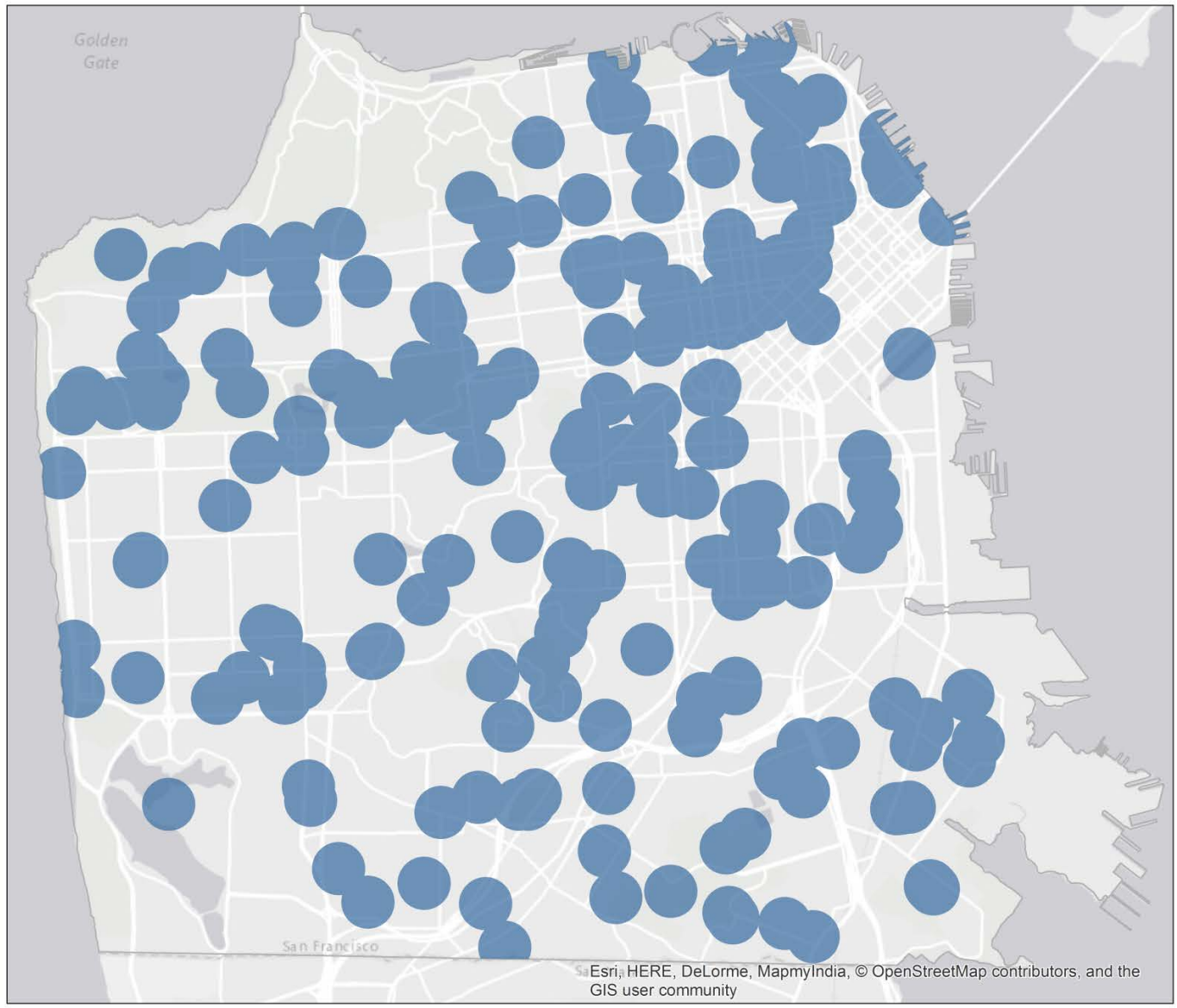
**FIGURE 1A
PUBLIC RESTROOMS IN THE CITY & COUNTY OF SAN FRANCISCO**



Sources: San Francisco Recreation & Parks Department, San Francisco Public Works



October 2015

**FIGURE 1B
PUBLIC RESTROOMS OPEN AFTER MIDNIGHT**



LEGEND

 0.2 MILE BUFFER

  Miles

Sources: San Francisco Recreation & Parks Department, San Francisco Public Works

October 2015

FIGURE 2
AREAS IN SAN FRANCISCO WITHIN 0.2 MILE OF A PUBLIC RESTROOM

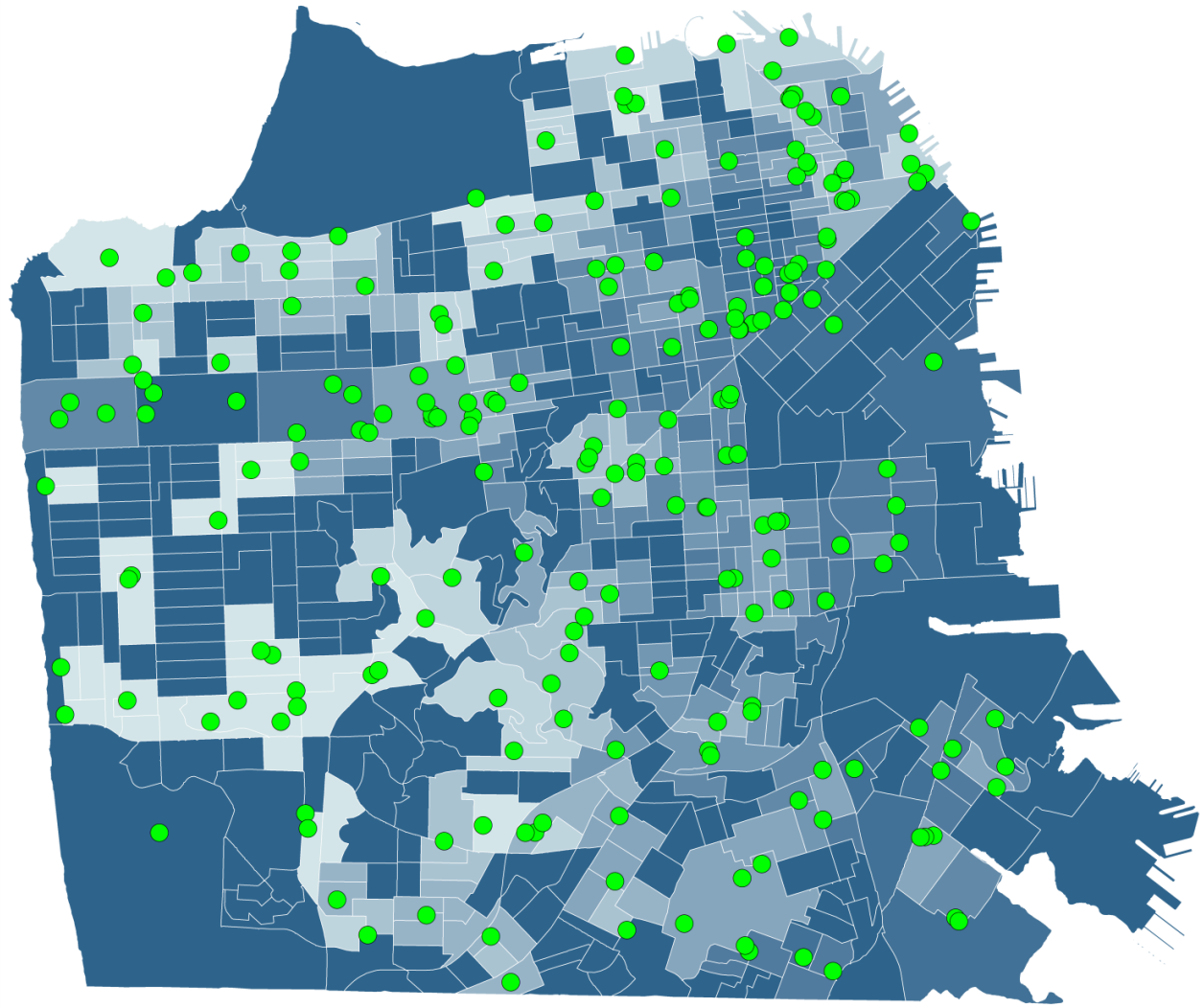


FIGURE 4
ACCESSIBILITY OF PUBLIC RESTROOMS TO THE HOMELESS POPULATION

October 2015

0 0.45 0.9 Miles

Sources: SF Recreation & Parks Department, SF Public Works, US Census Bureau, Applied Survey Research

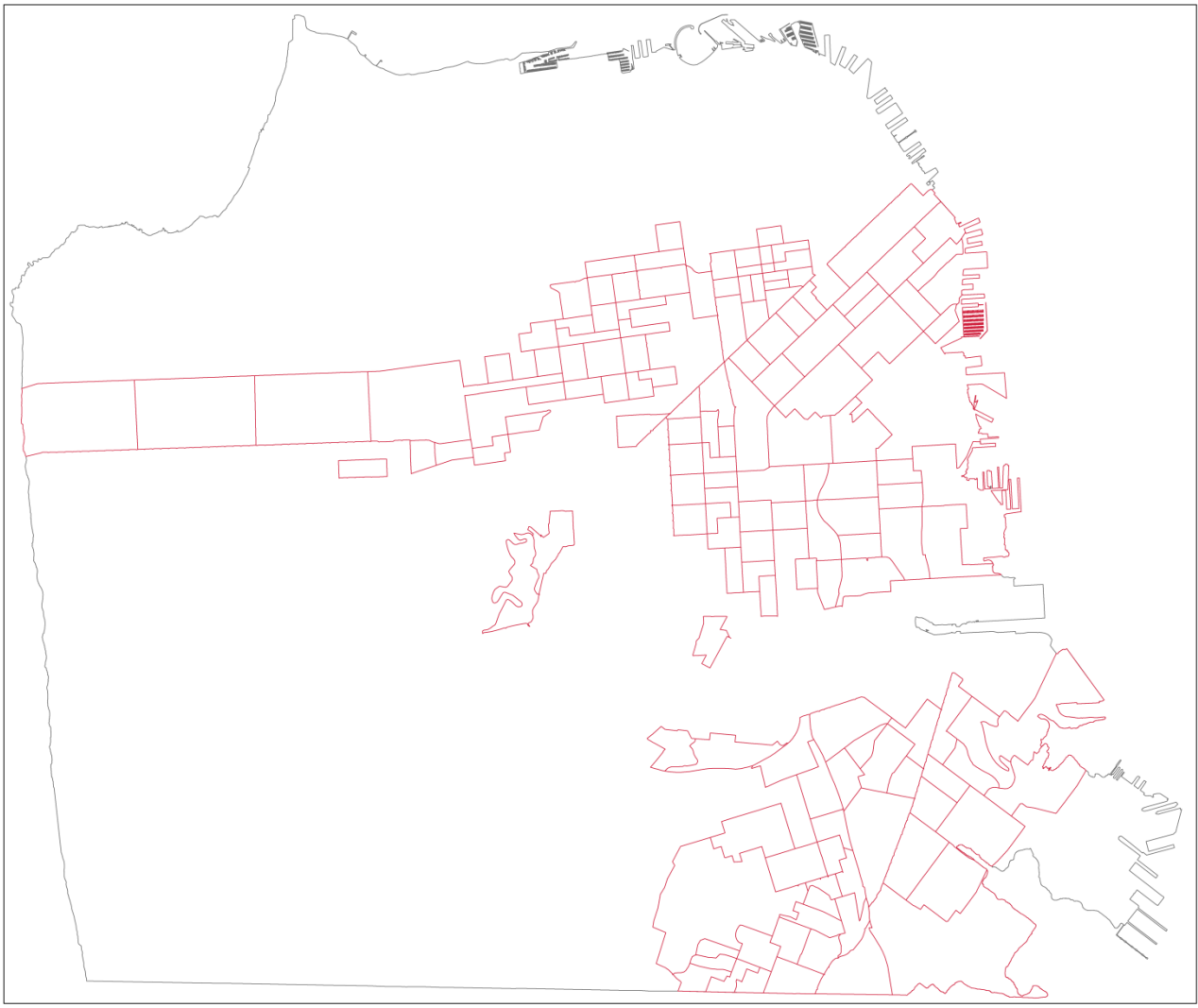
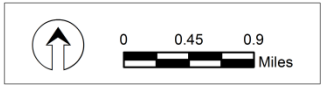
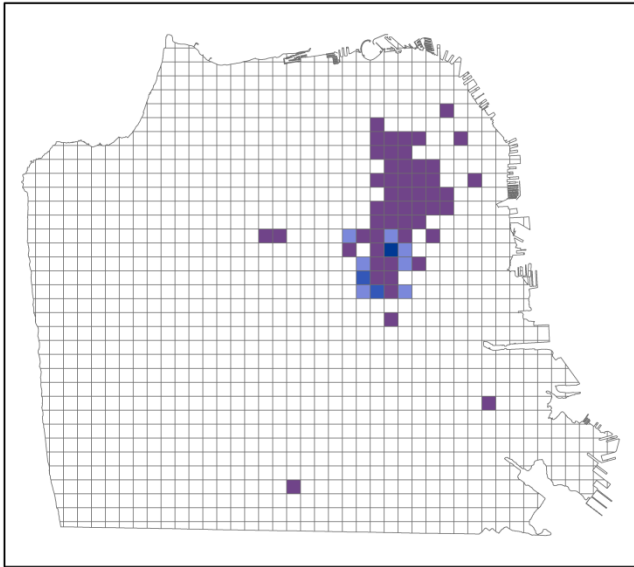
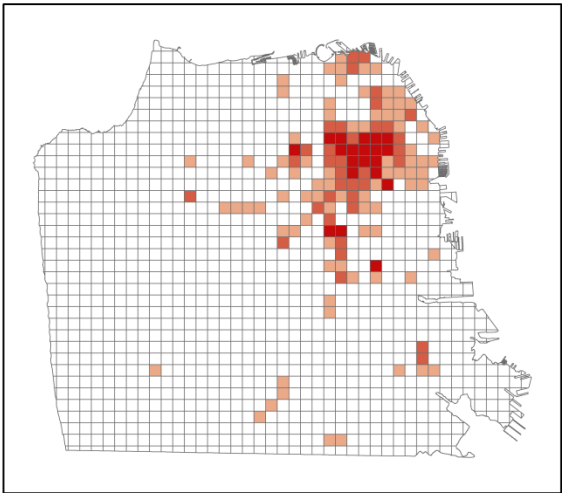
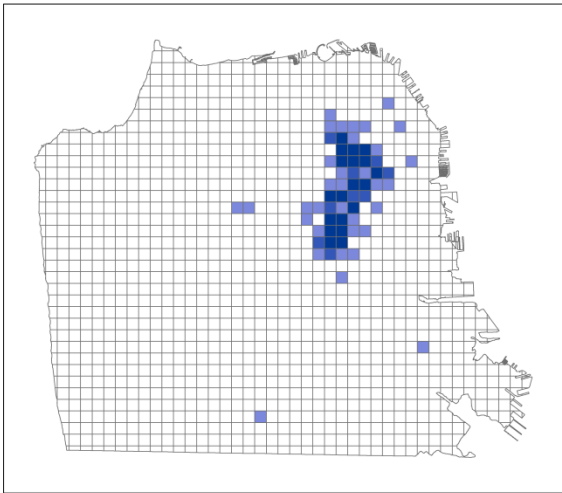


FIGURE 5
**POTENTIAL PRIORITY AREAS
FOR IMPROVING ACCESS TO
PUBLIC RESTROOMS**

October 2015



Sources: SF Recreation & Parks Department, SF Public Works, US Census Bureau, Applied Survey Research



LEGEND

311 CALLS

- < 0.50 Std. Dev.
- 0.50 - 1.5 Std. Dev.
- 1.5 - 2.5 Std. Dev.
- > 2.5 Std. Dev.

CRIMES

- < 0.50 Std. Dev.
- 0.50 - 1.5 Std. Dev.
- 1.5 - 2.5 Std. Dev.
- > 2.5 Std. Dev.

Areas with high 311 calls and crime

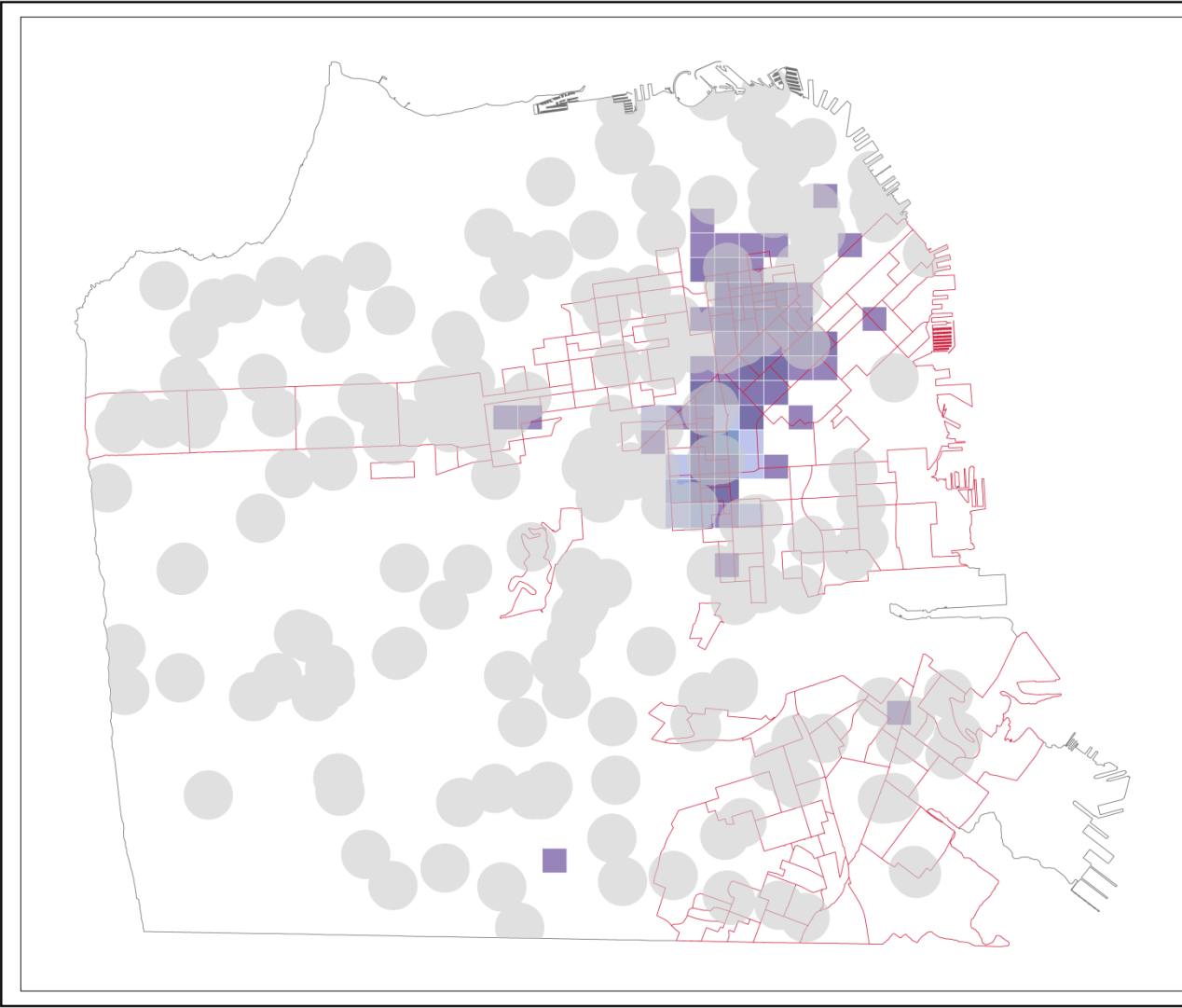
FIGURE 6

HOTSPOTS: CRIME AND 311 REQUESTS FOR STREET CLEANING DUE TO HUMAN WASTE OR URINE



October 2015

Sources: SF Recreation & Parks Department, SF Public Works, US Census Bureau, Applied Survey Research




LEGEND

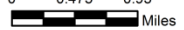
- Areas within 0.2 miles of an existing public restroom
- Potential priority areas for improving access to public restrooms
- Areas with a greater incidence of 311 requests and crime
- Areas with a greater incidence of 311 requests

FIGURE 7A
**OPPORTUNITIES FOR
EXPANSION OF THE PIT
STOP PROGRAM**

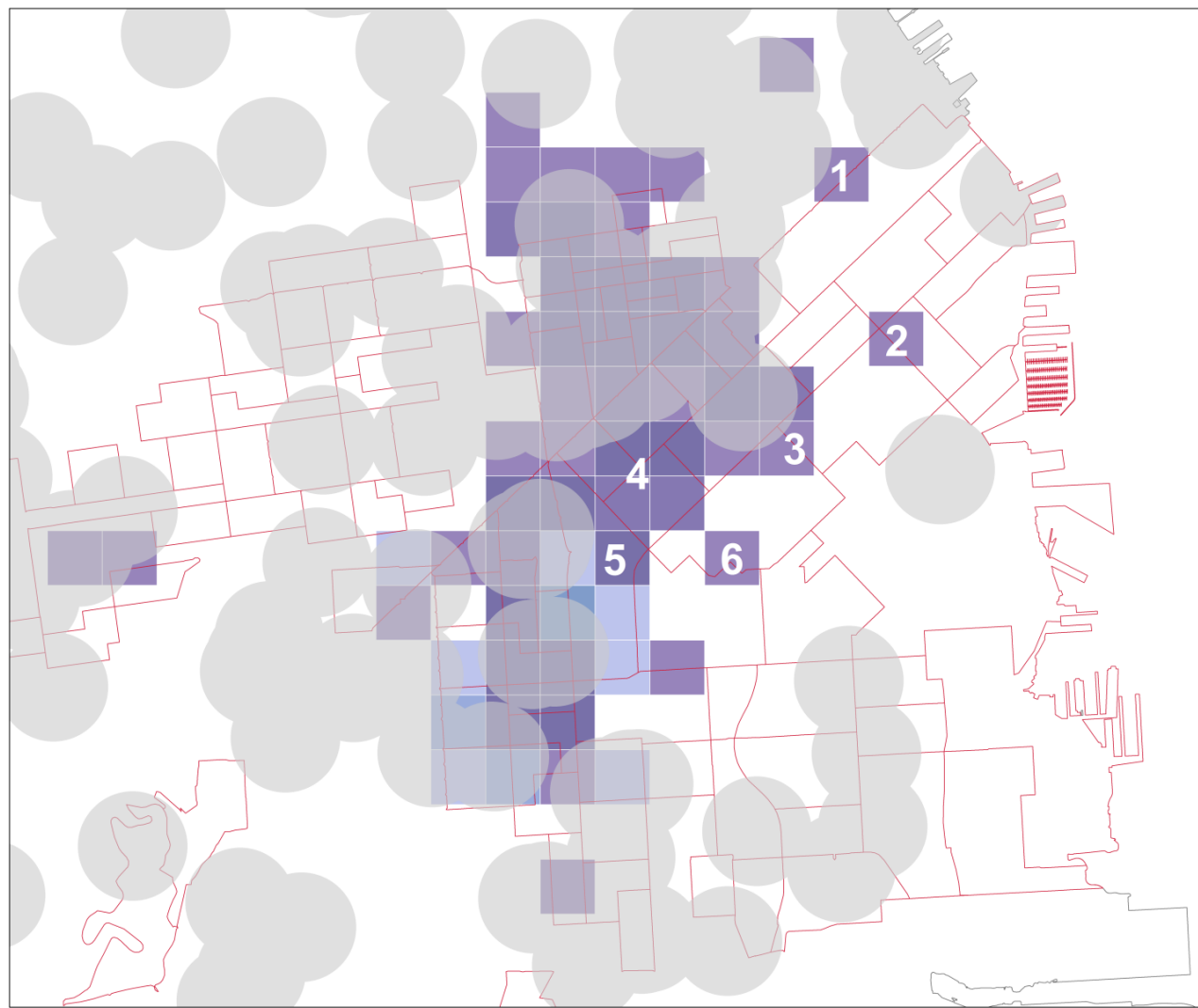
October 2015







0 0.475 0.95
Miles



Sources: SF Recreation & Parks Department, SF Public Works, US Census Bureau, Applied Survey Research, DataSF



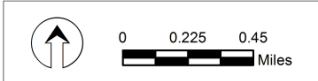
LEGEND

-  Areas within 0.2 miles of an existing public restroom
-  Potential priority areas for improving access to public restrooms
-  Areas with a greater incidence of 311 requests and crime
-  Areas with a greater incidence of 311 requests

- 1** Vicinity of Market between New Montgomery & Fremont
- 2** Vicinity of 3rd & Bryant
- 3** Vicinity of 6th & Bryant
- 4** Vicinity of 9th & Folsom
- 5** Vicinity of 13th & Folsom
- 6** Vicinity of 9th & Brannan

FIGURE 7B
OPPORTUNITIES FOR EXPANSION OF THE PIT STOP PROGRAM

October 2015



Sources: SF Recreation & Parks Department, SF Public Works, US Census Bureau, Applied Survey Research, DataSF

Findings and Recommendations



Findings

- There are many daytime restrooms available throughout the City
 - There are a few locations that have a higher demand
 - Limited number of locations with a need for additional toilets
- Significantly less availability citywide between 9:00 PM and 9:00 AM
 - Pit Stop locations and libraries close by 9:00 PM
 - Recreation and Park facilities are generally open from dawn until dusk





Recommendations

- Continue a data-driven approach to
 - develop new Pit Stop Pilot locations, and
 - staff more locations
- Evaluate opportunities to expand public restroom hours and staffing
- Evaluate staffing pilots and restroom use



Other Public Toilet Resources

Toilet Option	Benefits	Per Unit Cost
Porta-Potty Rentals	Short-term or long-term; moveable	\$200 per month*
Portable Personal Toilet	Available anytime, day or night	\$80 plus \$3 per bag
AirPnP/Toilet Finder Apps	Clean comfortable bathroom anywhere available	Varies from \$0-\$5 per use
PPlanter	Available anytime; safe but transparent	\$150,000 plus maintenance
Portland Loo	Sturdy, designed for urban areas	\$140k-\$250k per unit plus \$12k maintenance**



*Cost does not include calls for service

**Costs may be higher depending on needed sewer connection

PPlanter Overview

- PPlanter is self contained, so it does not need water, power or sewer connections
- Provides transparency, dignity, accessibility and public safety
- Reuse of greywater and nutrient recovery
- Plants help treat the water and present a green aesthetic to bathroom facilities
- Available 24/7
- Not for all human waste
 - May be a solution for areas where urine is an issue



Portland Loo

- Designed to be durable in an urban setting
- Environmentally friendly
 - Solar and AC-powered
 - LED lighting
 - 1.28 gallons/flush
- Requires sewer connection
- In 2012, Portland paid an estimated \$140,000 for the first loo
 - Subsequent units: \$60,000 each
 - Annual maintenance fee: \$12,000 per unit



Associated Benefits of Public Toilets

- Environmental
 - Recycled Water
 - Clean streets
 - Supports Public Works Department pee resistant paint expansion efforts
- Cost reduced for street clean up and steam clean requests etc.
- Clean and safe accessible facilities



Benefits of Staffed Toilets

- Human dignity: Providing people who need the bathroom a clean and safe place to relieve themselves
- Clean and safe public facilities
- Jobs program providing workforce development opportunities for low-income individuals
 - \$16-\$20/hour



Staffing

- As of October 2015 the Pit Stop Pilot Program includes 9 staffed toilet locations
- Portable toilets are staffed 8 hours/day 4 days/week
- JCDecaux are staffed 12 hours/day 7 days/week
 - Unstaffed locations are open 24/7



Staffing Continued

- Public Works prioritized Pit Stop Pilot locations based on the following:
 - Proximity to soup kitchens
 - Walking survey of feces
 - Public Works street cleaner feedback
 - 311 human waste requests
- Public Works proposed 1-year pilot for staffing at a cost of \$87,360 per location
 - Church/Market JCDecaux
- Public Works is in the process of identifying other priority locations for staffing





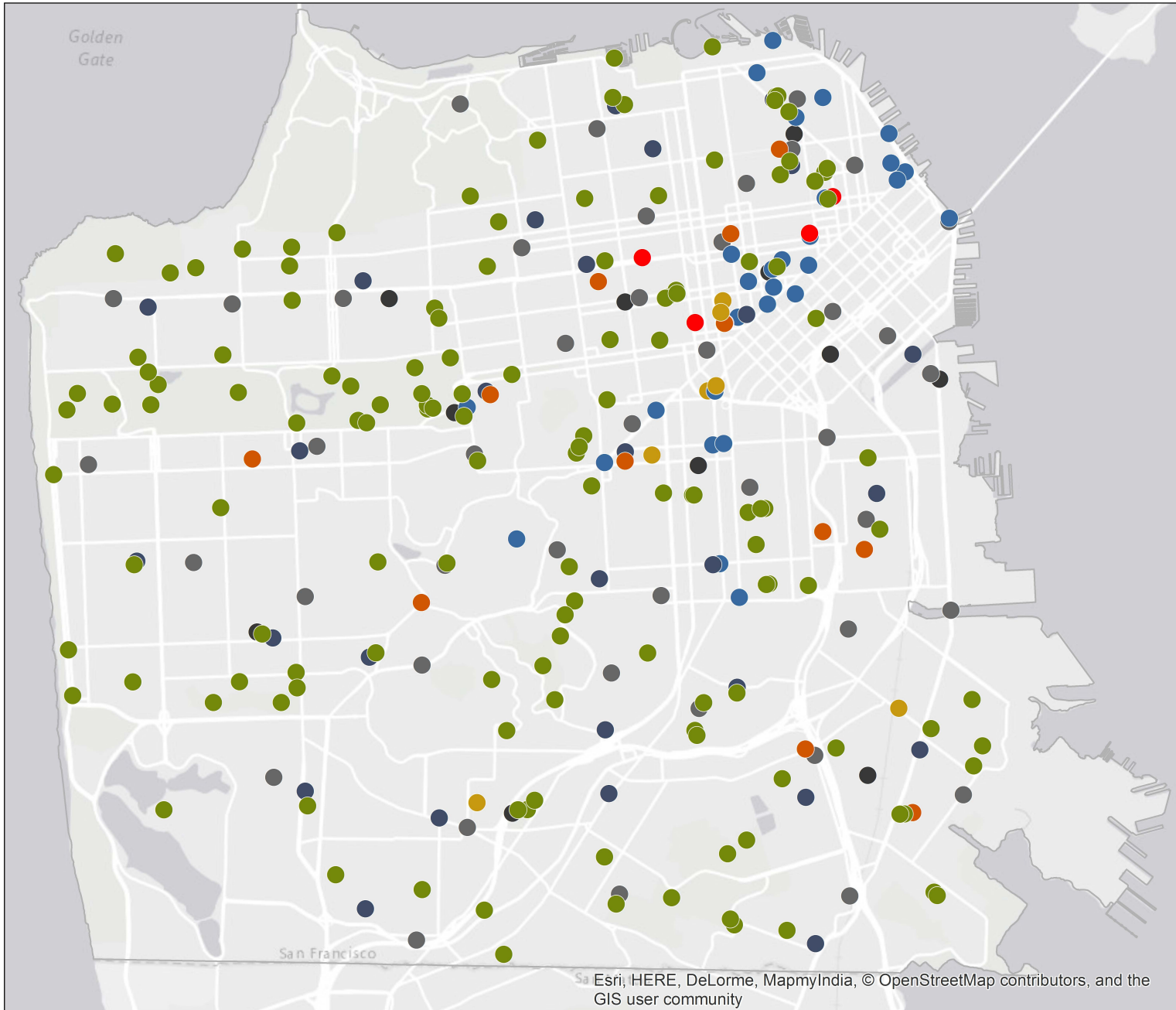
Pit Stop Pilot Program Budget

- \$101,600 per portable location
- \$87,360 per staffing attendant
- \$60,000 add-back from Supervisor Breed will be used to staff the JCDecaux restroom at Stanyan and Waller



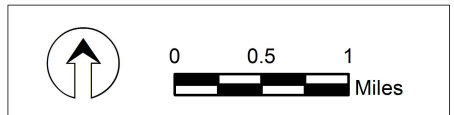
Toilet Summary Cost Comparison

	JCDecaux	Portable	Porta-Potty	PPlanter (full system)	Portland Loo
Day/Night	24 hours w/out attendant	Day (current)	24 hours	24 hours	24 hours
Estimated Annual Cost (per unit)	\$0	\$101,600	\$2,400	\$150,000	\$212,000
Staffing Costs (14 hours)	\$101,920	\$101,920	\$101,920	\$101,920	\$101,920
Total Cost	\$101,920	\$203,520	\$104,320	\$251,920	\$313,920



RESPONSIBLE DEPARTMENT

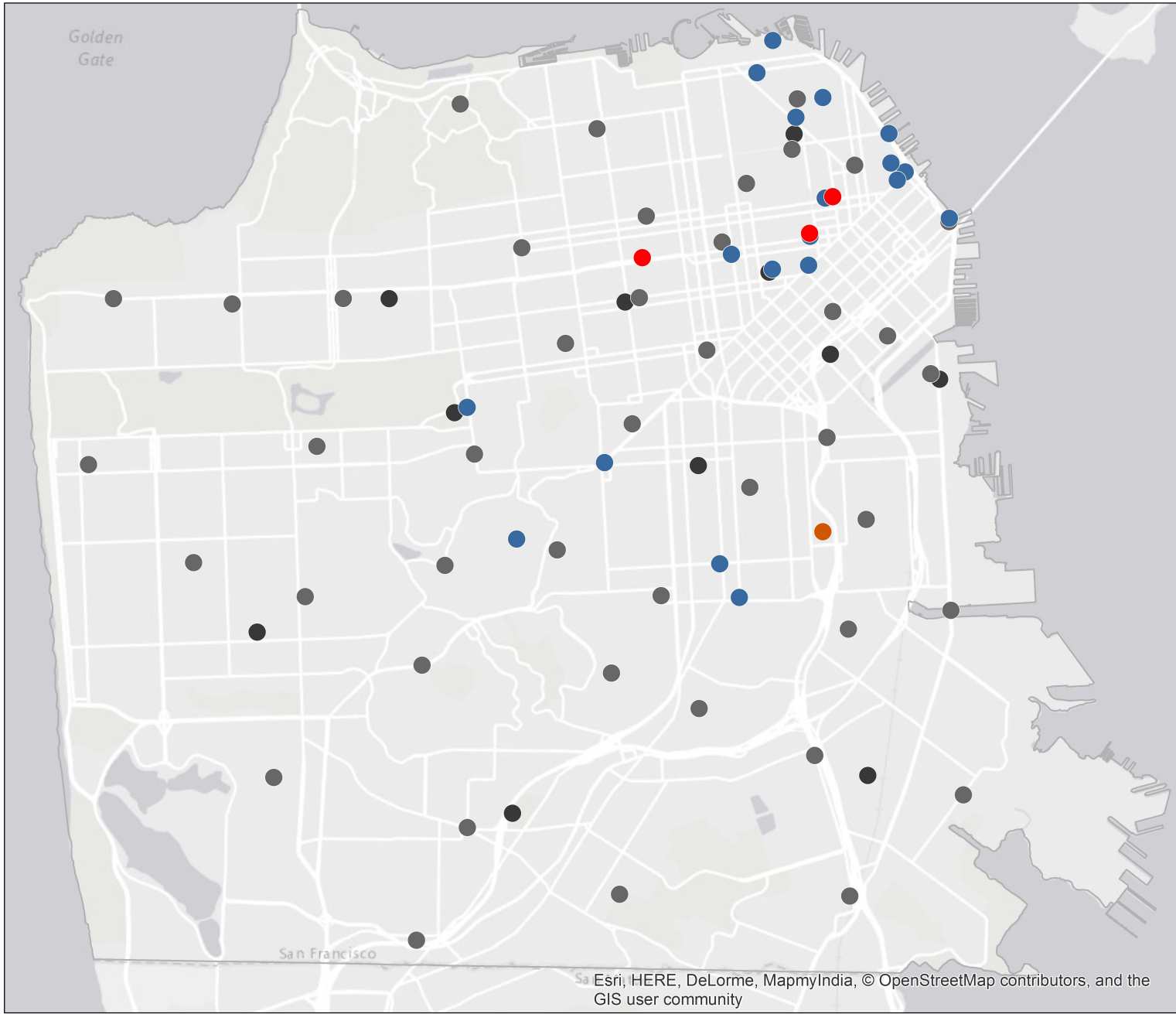
●	DPH (13)
●	DPW (30)
●	LIB (28)
●	REC (138)
●	SFMTA (4)
●	OTHER CCSF (7)
●	SFFD (43)
●	SFPD (11)



Sources: San Francisco Recreation & Parks Department, San Francisco Public Works

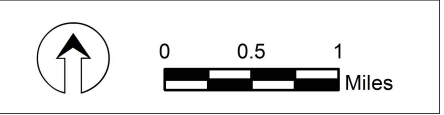
October 2015

**FIGURE 1A
PUBLIC RESTROOMS IN THE CITY & COUNTY OF SAN FRANCISCO**



RESPONSIBLE DEPARTMENT

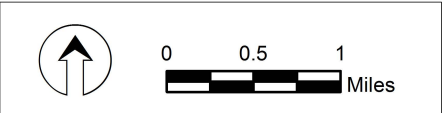
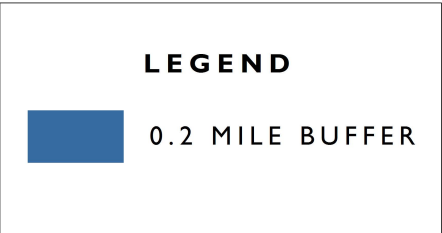
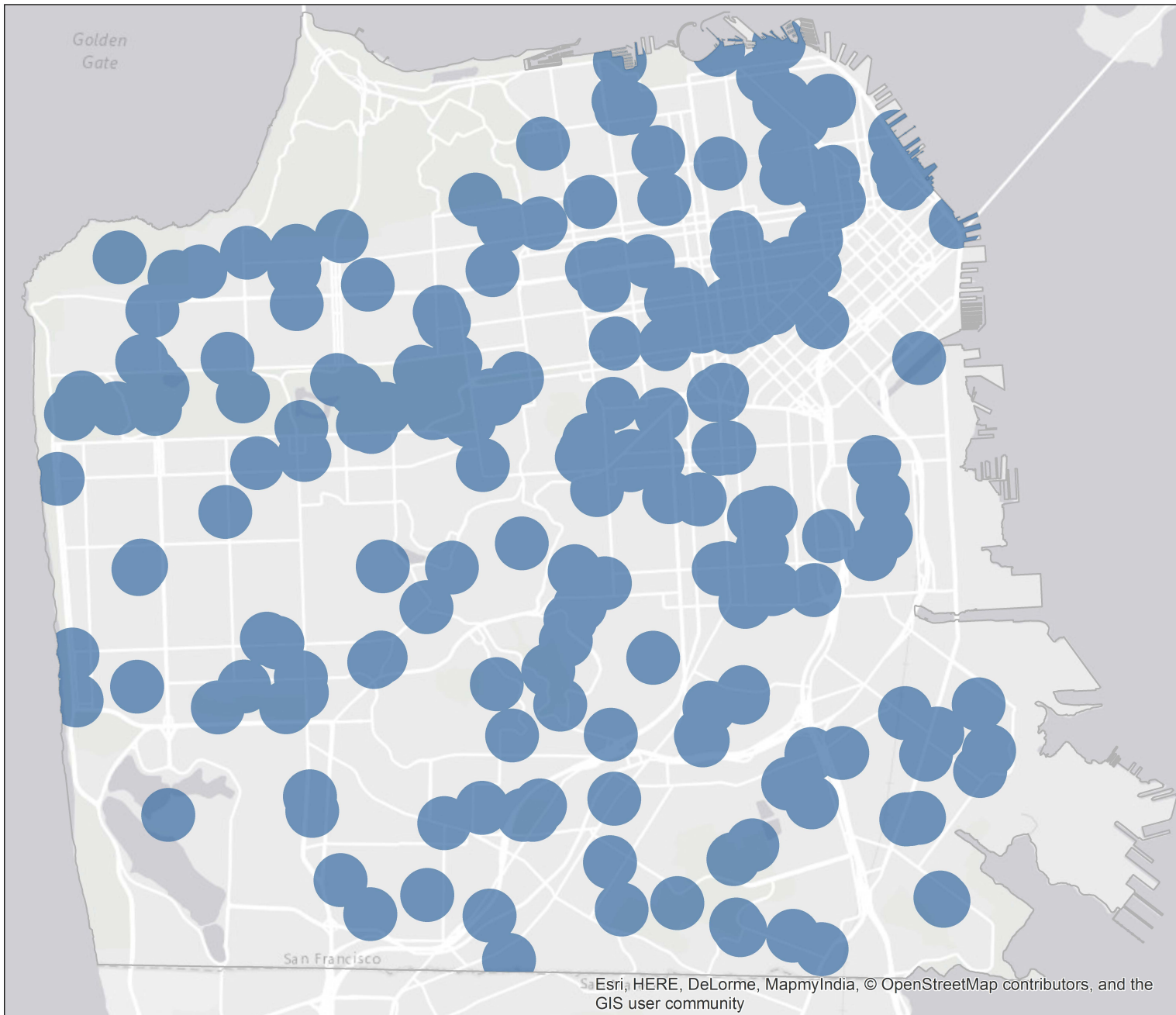
● (Orange)	DPH (1)
● (Blue)	DPW (20)
● (Red)	SFMTA (3)
● (Dark Gray)	SFFD (43)
● (Black)	SFPD (11)



Sources: San Francisco Recreation & Parks Department, San Francisco Public Works

October 2015

**FIGURE 1B
PUBLIC RESTROOMS OPEN AFTER MIDNIGHT**



Sources: San Francisco Recreation & Parks Department, San Francisco Public Works

October 2015

FIGURE 2
AREAS IN SAN FRANCISCO WITHIN 0.2 MILE OF A PUBLIC RESTROOM

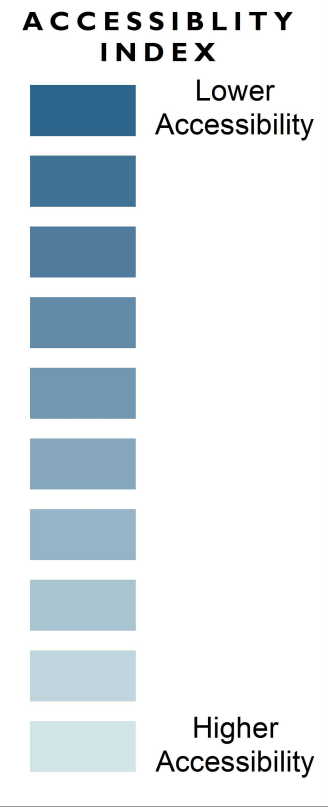
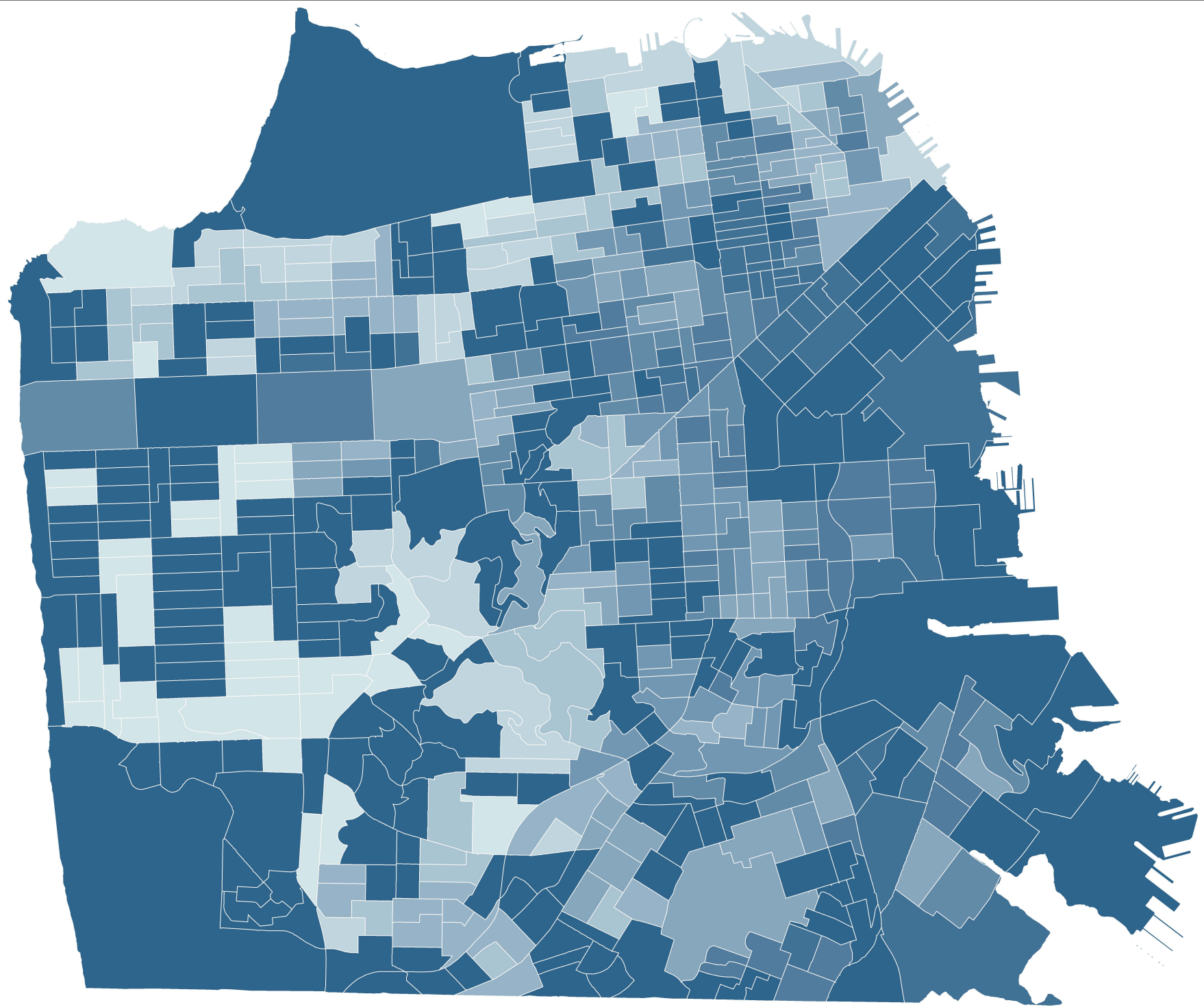
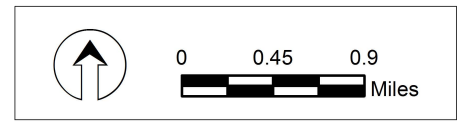


FIGURE 3
ACCESSIBILITY OF PUBLIC RESTROOMS TO THE HOMELESS POPULATION



October 2015

Sources: SF Recreation & Parks Department, SF Public Works, US Census Bureau, Applied Survey Research

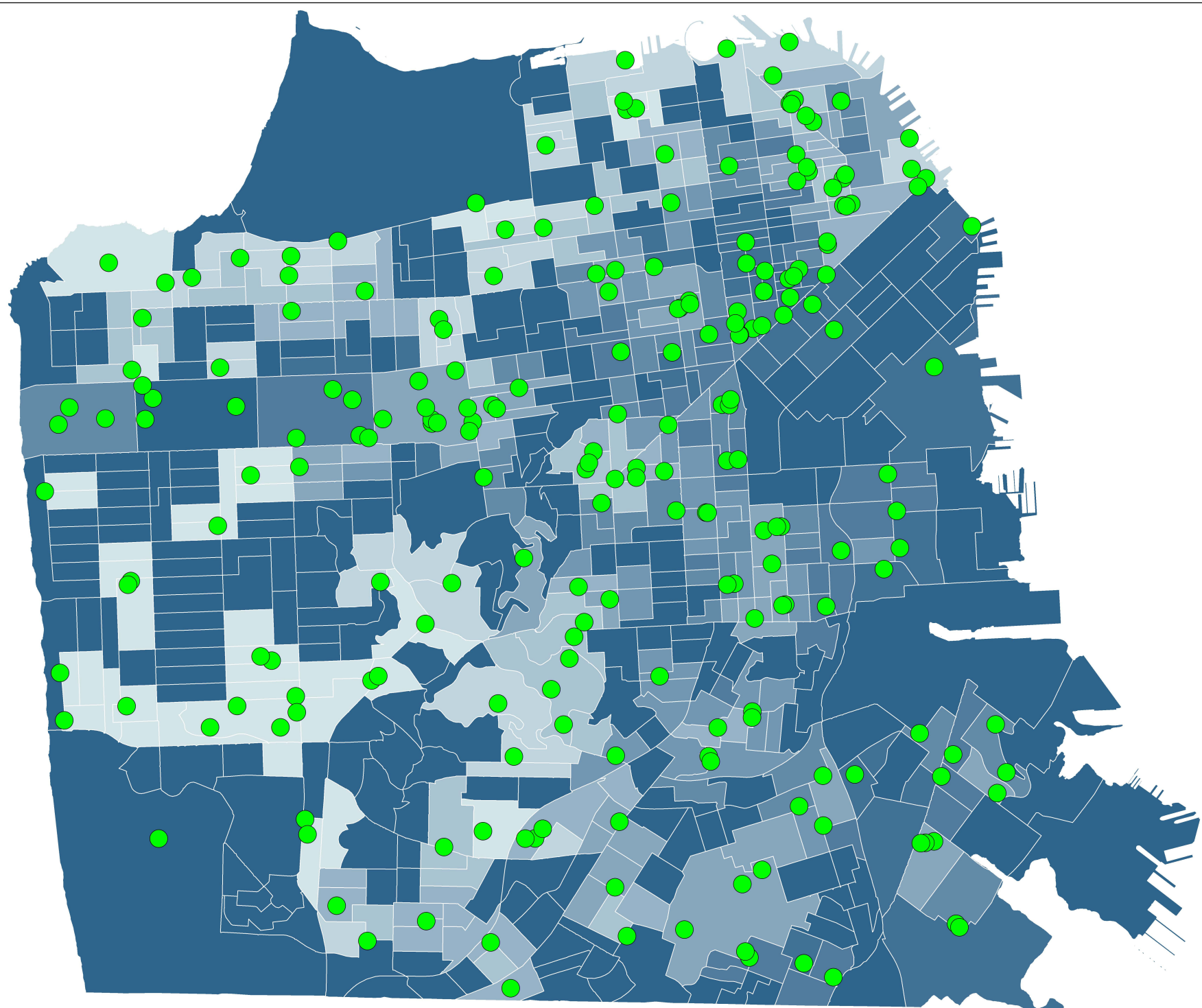
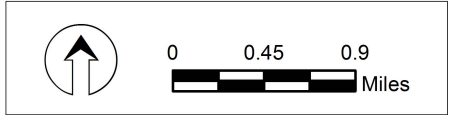


FIGURE 4
ACCESSIBILITY OF PUBLIC RESTROOMS TO THE HOMELESS POPULATION



October 2015

Sources: SF Recreation & Parks Department, SF Public Works, US Census Bureau, Applied Survey Research

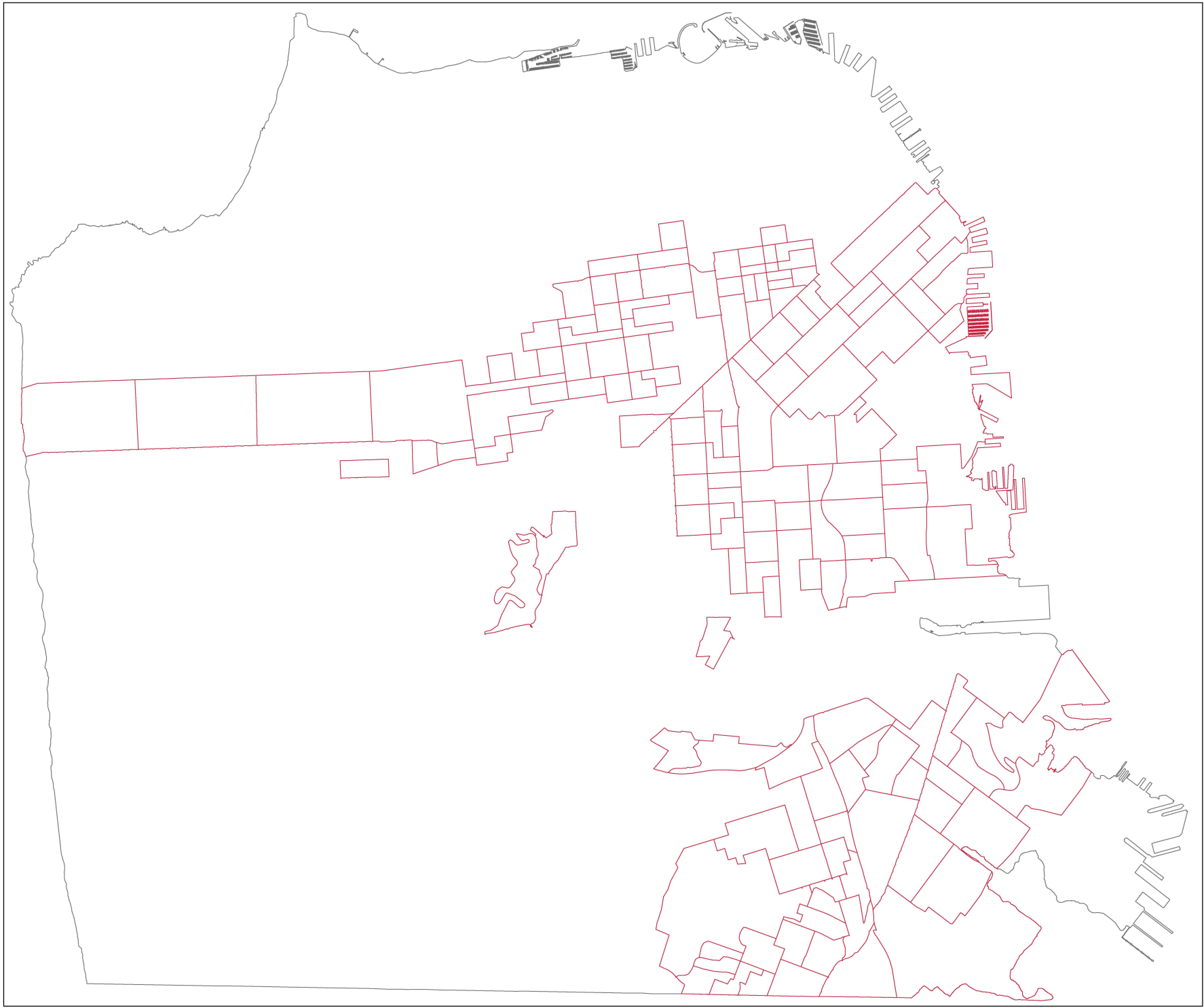
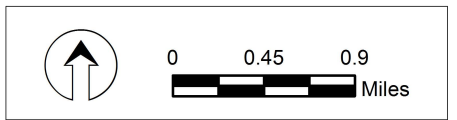
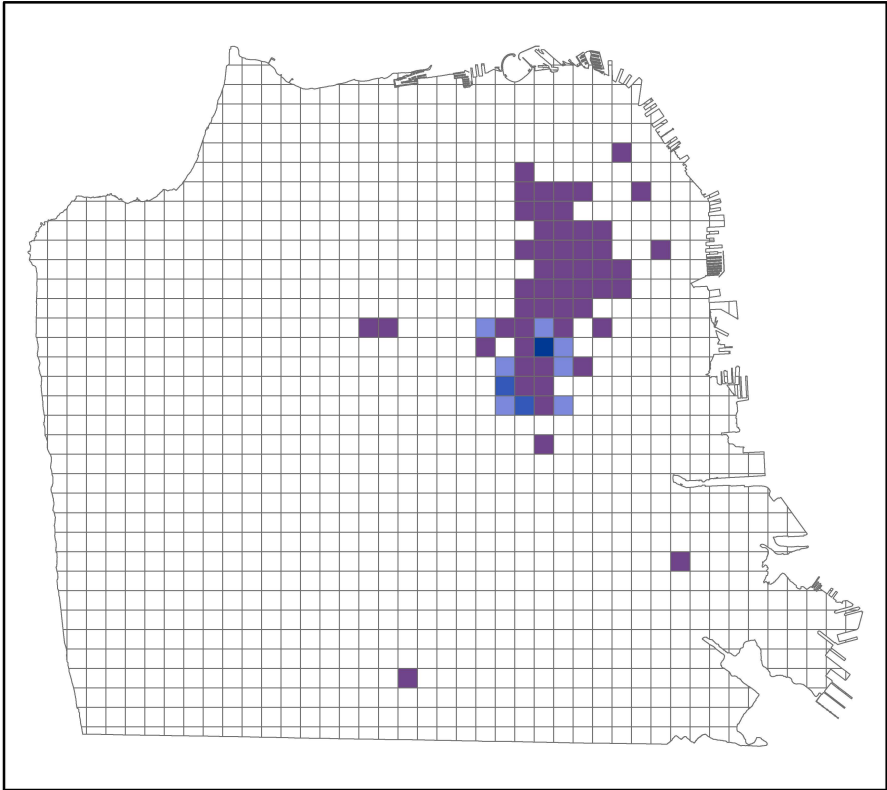
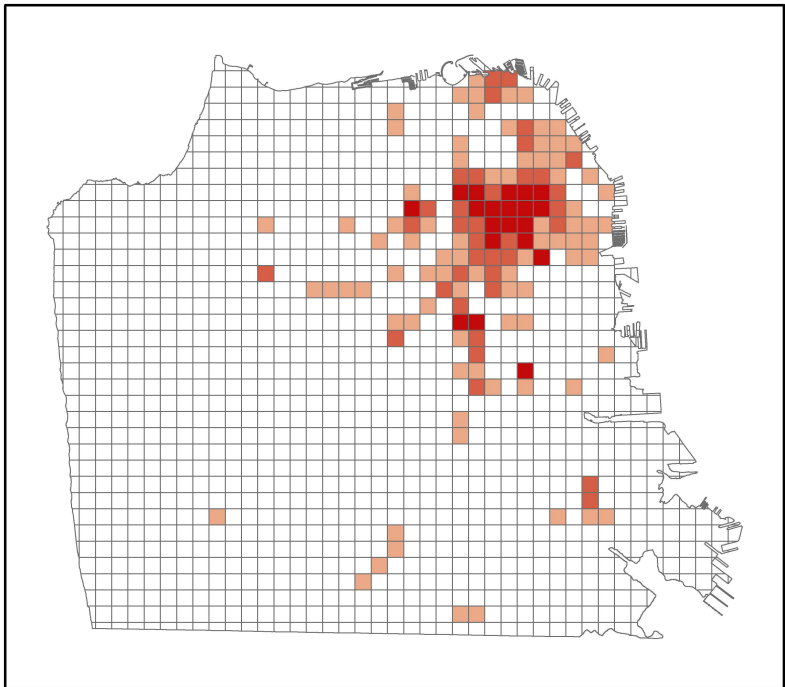
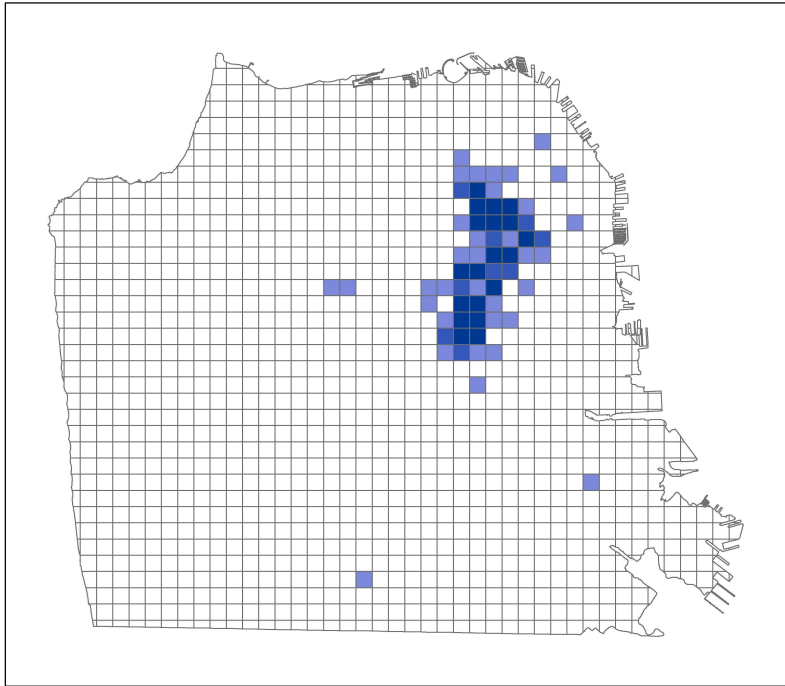


FIGURE 5
**POTENTIAL PRIORITY AREAS
FOR IMPROVING ACCESS TO
PUBLIC RESTROOMS**

October 2015







Sources: SF Recreation & Parks Department, SF Public Works, US Census Bureau, Applied Survey Research







LEGEND

311 CALLS

-  < 0.50 Std. Dev.
-  0.50 - 1.5 Std. Dev.
-  1.5 - 2.5 Std. Dev.
-  > 2.5 Std. Dev.

CRIMES

-  < 0.50 Std. Dev.
-  0.50 - 1.5 Std. Dev.
-  1.5 - 2.5 Std. Dev.
-  > 2.5 Std. Dev.

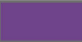
 Areas with high 311 calls and crime

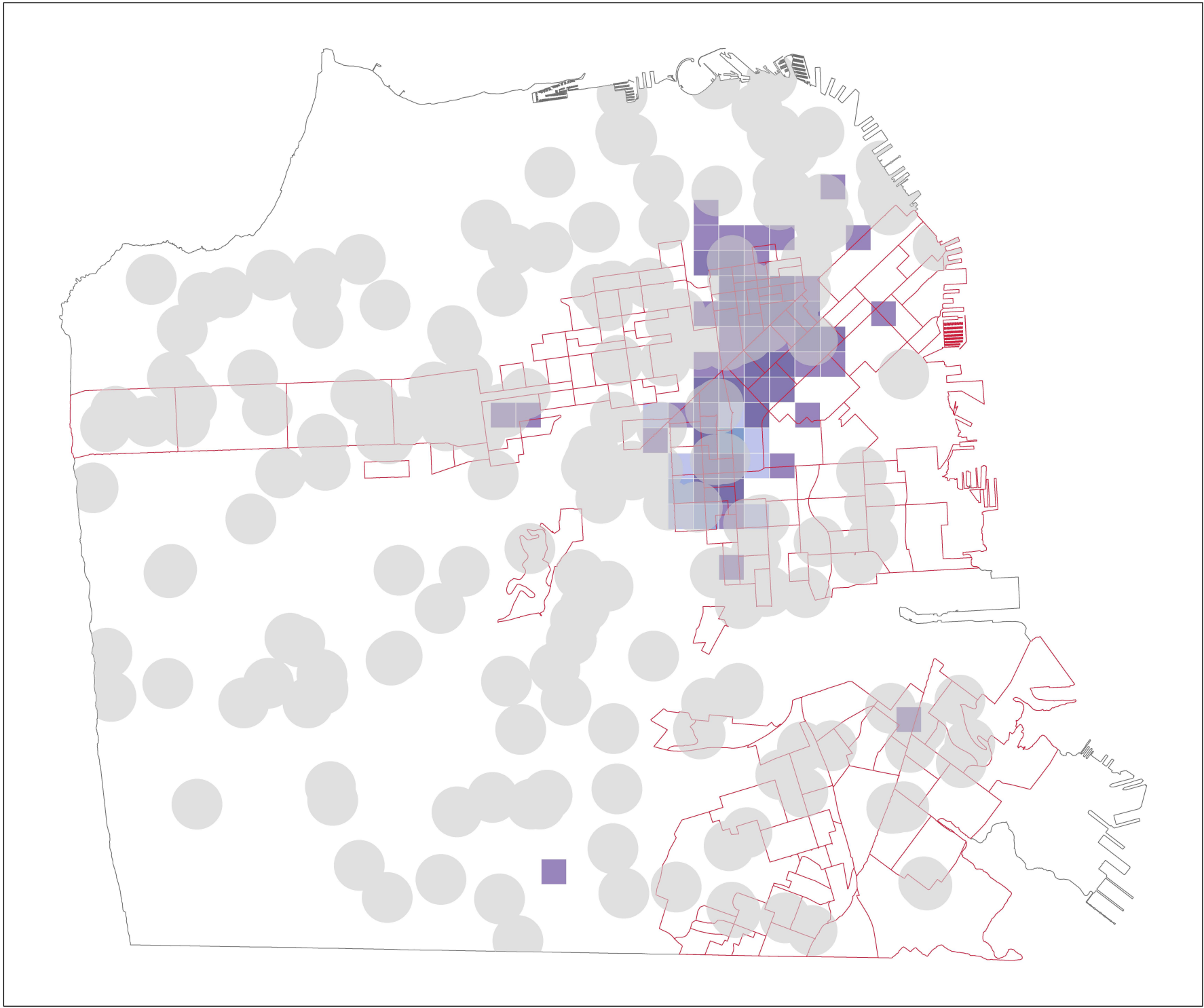
FIGURE 6

HOTSPOTS: CRIME AND 311 REQUESTS FOR STREET CLEANING DUE TO HUMAN WASTE OR URINE



October 2015

Sources: SF Recreation & Parks Department, SF Public Works, US Census Bureau, Applied Survey Research



LEGEND





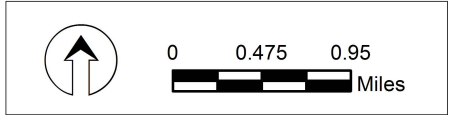
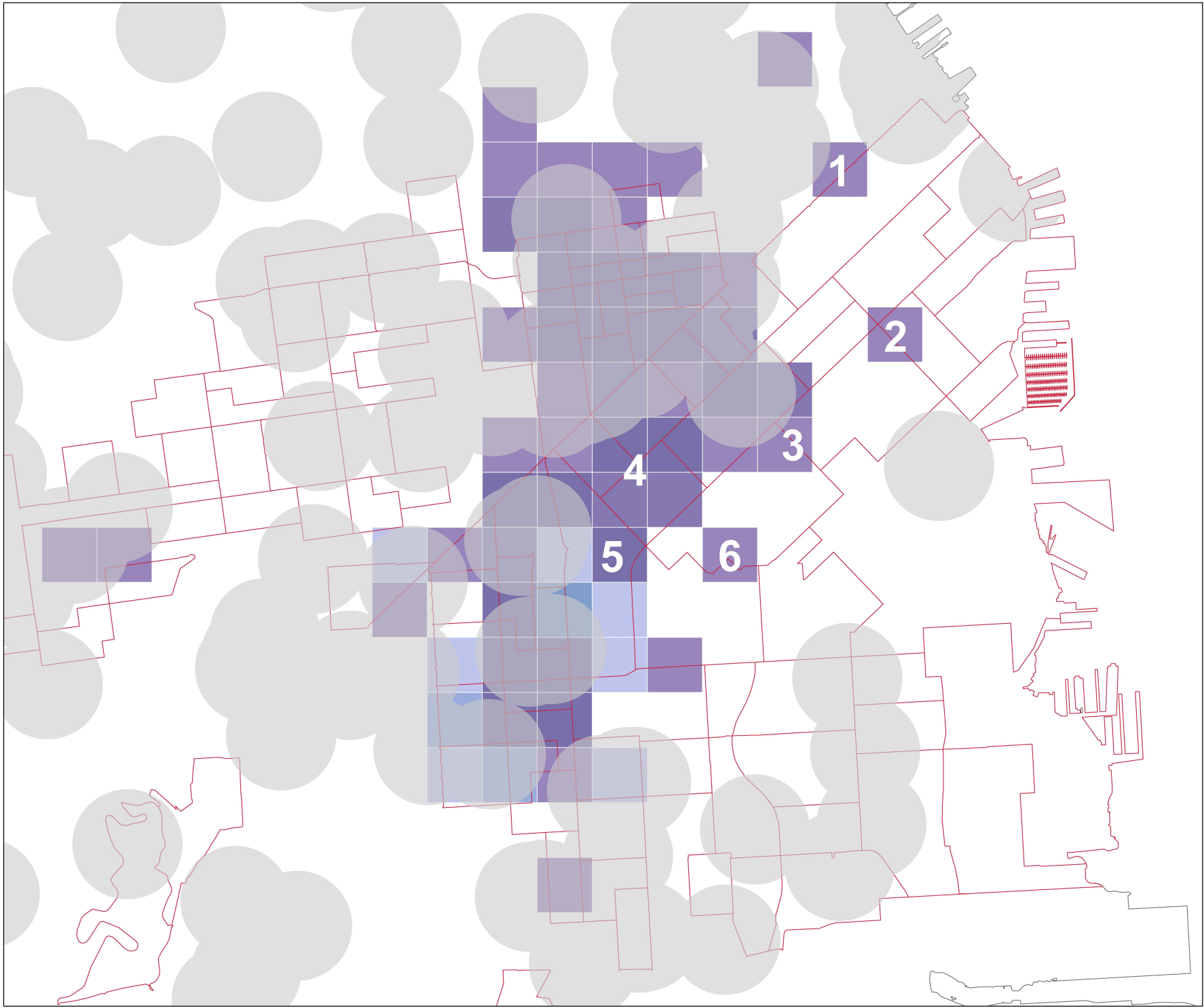
-  Areas within 0.2 miles of an existing public restroom
-  Potential priority areas for improving access to public restrooms
-  Areas with a greater incidence of 311 requests and crime
-  Areas with a greater incidence of 311 requests

FIGURE 7A
OPPORTUNITIES FOR EXPANSION OF THE PIT STOP PROGRAM





October 2015



Sources: SF Recreation & Parks Department, SF Public Works, US Census Bureau, Applied Survey Research, DataSF

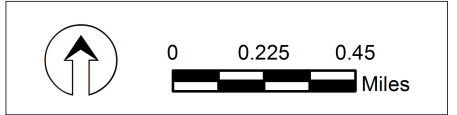


LEGEND

-  Areas within 0.2 miles of an existing public restroom
-  Potential priority areas for improving access to public restrooms
-  Areas with a greater incidence of 311 requests and crime
-  Areas with a greater incidence of 311 requests

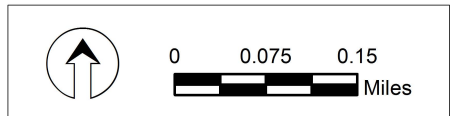
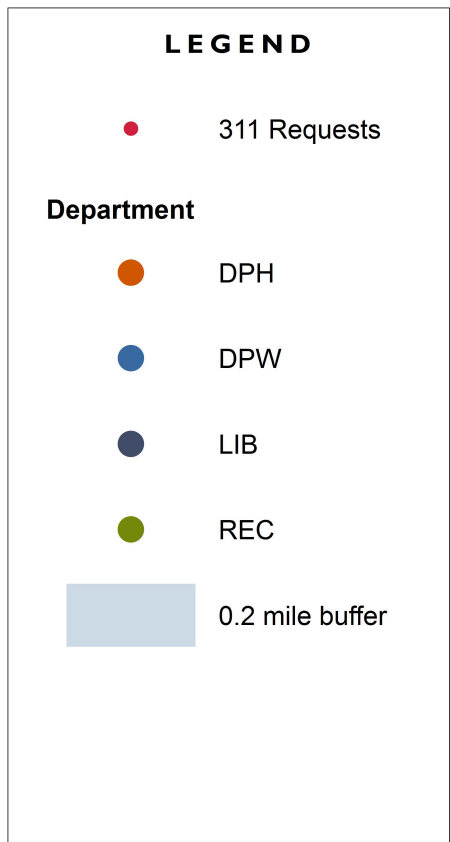
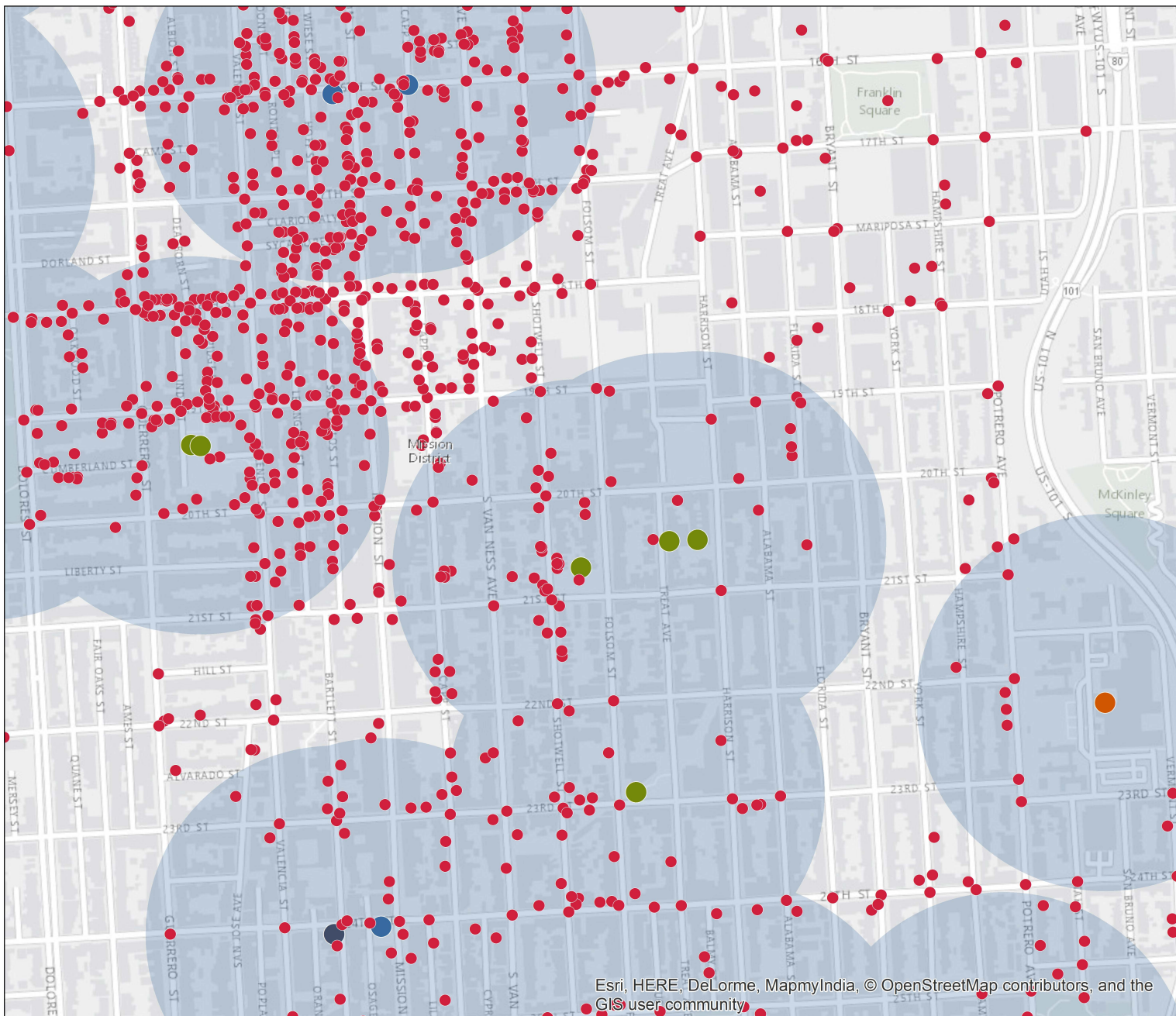
- 1** Vicinity of Market between New Montgomery & Fremont
- 2** Vicinity of 3rd & Bryant
- 3** Vicinity of 6th & Bryant
- 4** Vicinity of 9th & Folsom
- 5** Vicinity of 13th & Folsom
- 6** Vicinity of 9th & Brannan

FIGURE 7B
OPPORTUNITIES FOR EXPANSION OF THE PIT STOP PROGRAM



October 2015

Sources: SF Recreation & Parks Department, SF Public Works, US Census Bureau, Applied Survey Research, DataSF



Esri, HERE, DeLorme, MapmyIndia, © OpenStreetMap contributors, and the GIS user community

Sources: San Francisco Recreation & Parks Department, San Francisco Public Works, DataSF

October 2015

FIGURE 8

311 REQUESTS FOR STREET CLEANING IN RELATION TO PUBLIC RESTROOMS IN THE MISSION