



*Moscone Recreation Center*



*Rossi Playground*



*Fay Park*



*Crocker Amazon Playground*

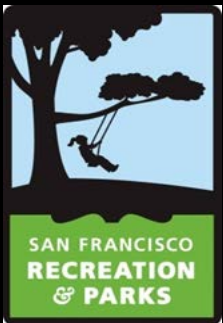


*Walter Haas Playground*



*St. Mary's Playground*

# 2000 Neighborhood Parks Bond CGOBOC September 25, 2014



## 2000 Neighborhood Parks General Obligation Bond Summary

- Reappropriated **\$5,654,950** into Master Project
- RPD Commission approved allocations to fulfill our commitments to ongoing projects:
  - **Minnie Lovie Ward Playfield**
  - **2008 Restrooms Program – Great Hwy**
  - **Coit Tower**
  - **Boeddeker Park**
  - **Carl Larson Park**
  - **Randall Museum**
  - **Crocker Amazon**
  - **Civic Center Garage**
- Now just \$275,002 remains for future allocation





*Football, volleyball, and soccer fields at Minnie and Lovie Ward Playfield Opening Day September 14, 2014*

## CGOBOC September 25, 2014

**2008** Clean and Safe Neighborhood **PARKS GO BOND**



# 2008 Clean and Safe Parks Bond

## Now 94% spent + encumbered

(excluding Contingency and Beach Chalet)

Mission Dolores Park in construction!  
Raymond Kimbell Playground in construction!



Mission Dolores Park



Raymond Kimbell Playground



2008 Clean and Safe Neighborhood **PARKS GO BOND**



# Port Projects: 2008 Clean and Safe Parks Bond



- Complete: Brannan Street Wharf (above), Pier 43 Bay Trail Link, Bayfront Park, Heron's Head Park, Blue-Greenway Design Guidelines, Cruise Terminal Plaza
- Construction: Blue-Greenway Signage and Site Furnishings, Bayview Gateway
- Design: Crane Cove Park (to be constructed with 2008 & 2012 bond funds), Public Art



**2008** Clean and Safe Neighborhood **PARKS GO BOND**





*Site plan rendering of Crane Cove Park*

**CGOBOC September 25, 2014**

**2012 SF Clean and Safe Neighborhood **PARKS GO BOND****



# Waterfront Parks



Planning: Warm Water Cove, Agua Vista Park, Islais Creek Improvements

Design: Crane Cove (design is part of 2008 bonds, construction will be 2008 & 2012 bonds)

Complete: Cruise Terminal Plaza (formerly Northeast Wharf Plaza, above)



**2012 SF Clean and Safe Neighborhood PARKS GO BOND**



# Budget Status – Phase 1

About half the Bond Contingency is allocated to Phase 1 projects and we see an accelerating bidding climate

Glen Canyon Park  
West Sunset Playground  
Joe DiMaggio Playground



Currently scoping design elements that could be alternates and undergoing value engineering

Looking ahead to meet this challenge, we are:

- Hiring a cost estimator to re-evaluate the budgets for Phase 2 projects
- Inform and develop strategy for use of Contingency funds

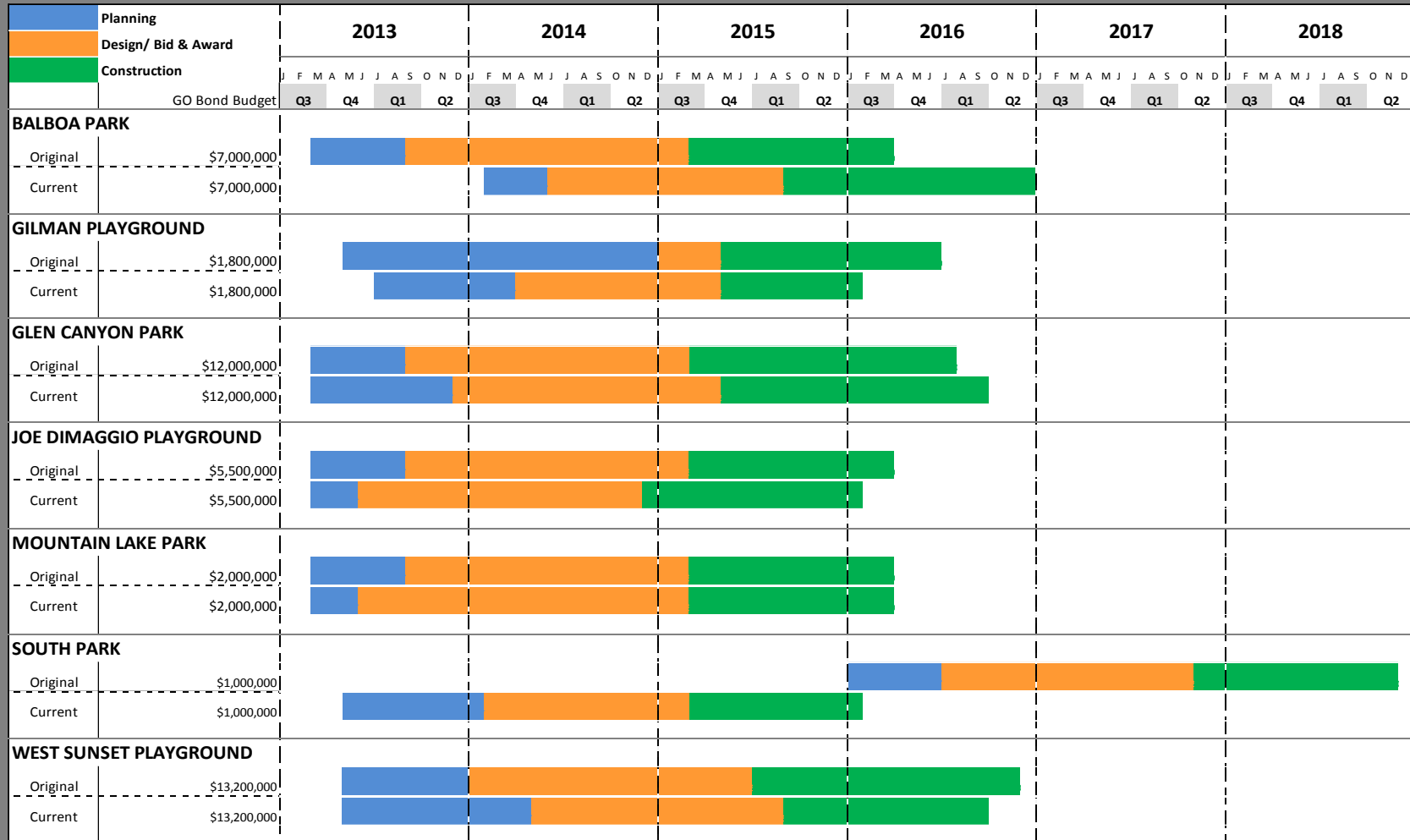


**2012 SF Clean and Safe Neighborhood PARKS GO BOND**





# Schedule Status – Phase 1



2012 SF Clean and Safe Neighborhood **PARKS GO BOND**

