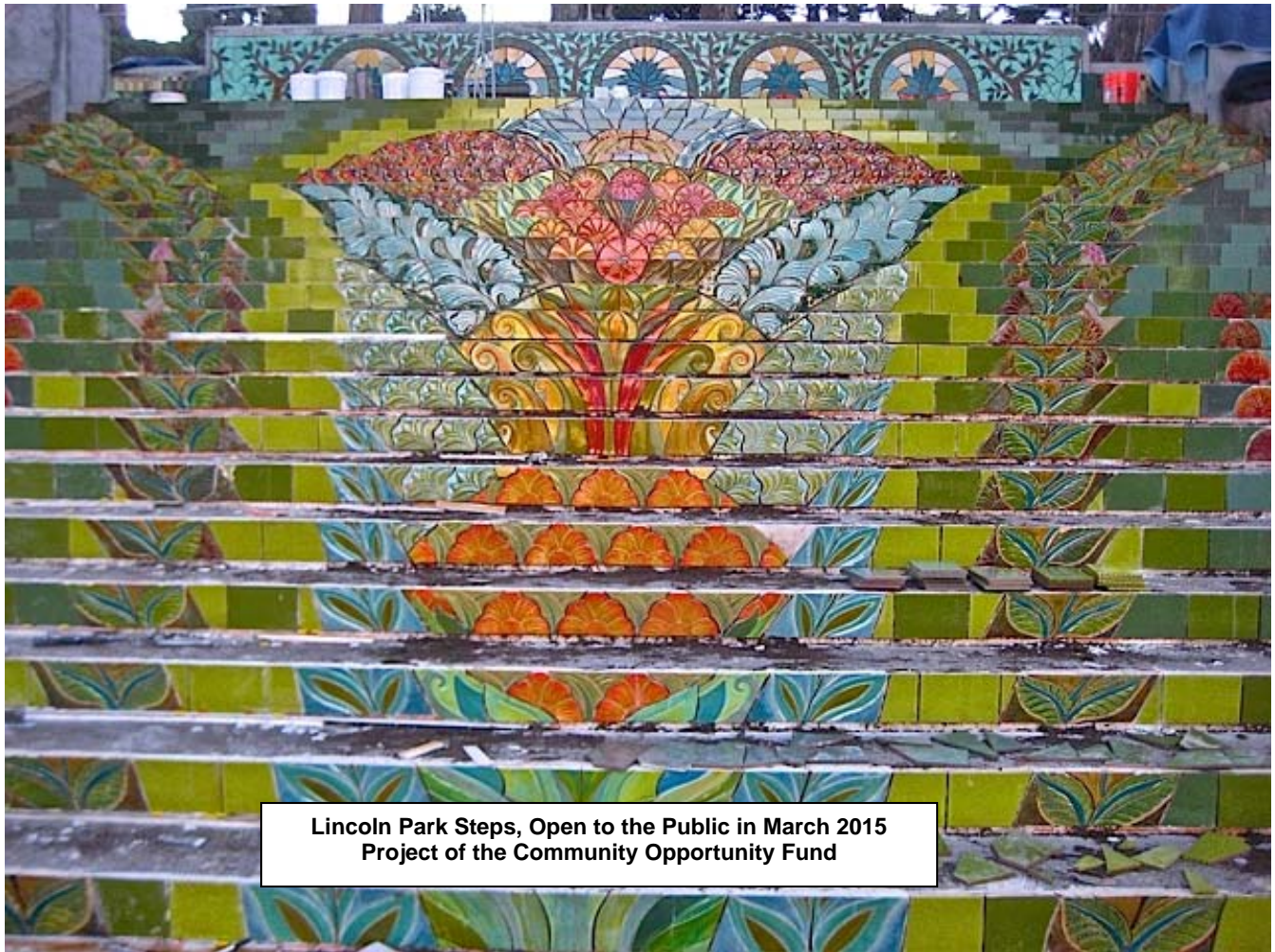


# 2008 Clean & Safe Neighborhood Parks Bond

## QUARTERLY STATUS REPORT PRESENTED TO THE

Citizens' General Obligation Bond Oversight Committee

**As of April 2015**



### PREPARED BY

Terence Chow, Recreation & Parks Department, Accountant, 581-2546, [terence.chow@sfgov.org](mailto:terence.chow@sfgov.org)  
Maureen Devlin, Recreation & Parks Department, Analyst, 581-2572 [Maureen.devlin@sfgov.org](mailto:Maureen.devlin@sfgov.org)  
James Hurley, Port of San Francisco, Analyst, 274-0598, [james.hurley@sfport.com](mailto:james.hurley@sfport.com)

### PRESENTED BY

Dawn Kamalanathan, Recreation & Parks Department, Director of Planning and Capital Management, 581-2544

[dawn.kamalanathan@sfgov.org](mailto:dawn.kamalanathan@sfgov.org)

Elaine Forbes, Port of San Francisco, Deputy Director of Finance & Administration, 274-0445

[elaine.forbes@sfport.com](mailto:elaine.forbes@sfport.com)



# **2008 Clean & Safe Neighborhood Parks Bond**

Citizens' General Obligation Bond Oversight Committee

**April 2015**

## **TABLE OF CONTENTS**

### **Executive Summary**

- Program Summary..... 3
- Program Background..... 5
- Program Budgets and Funding..... 6

**Project Status Summaries ..... 7**

**Program Timeline & Schedule..... 26**

### **Program Budget**

- Program Revenues..... 28
- Program Expenditures ..... 29



## Program Summary

### OVERVIEW

In February 2008, San Francisco's voters approved the 2008 Clean and Safe Neighborhood Parks General Obligation ("2008 Bond"). The **b**, followed by additional detail on each project.

### Recreation and Parks Department Projects

As of March 31, 2015, there are eleven (11) Neighborhood Park projects complete and Open to the Public: McCoppin Square, Helen Diller Playground at Mission Dolores, Mission Playground, Chinese Recreation Center, Fulton Playground, Sunset Playground, Lafayette Park, Cabrillo Playground, Cayuga Playground, Palega Playground, and Glen Canyon Park; two (2) projects are in construction: Mission Dolores Park and Raymond Kimbell Playground. The Citywide programs are preceding under their implementation plans.



Raymond Kimbell Playground is nearing end of construction and will be reopening to the public in June

## Program Summary

### HIGHLIGHTS:

#### Restroom Repair and Replacement Program – Portsmouth Square open for Chinese New Year celebrations!

Through the 2008 Park Bond, a Restroom Task Force evaluated free-standing restrooms on park property. Due to the high-user count of the Portsmouth Square restroom, the Task Force recommended that its user capacity be increased. Working with the community, the preferred solution was to replace the existing structure. The new building is designed to take advantage of natural ventilation and sunlight, and increase durability and ease of maintenance. The sloping roof line with wire-treatment along the edges is designed for pigeon-proofing. A combination of roof overhang and obscure glass limits sightlines into the restroom building from nearby taller buildings.



Portsmouth Square Restroom, designed by Hamilton+Aitken Architects, is a modern interpretation of traditional Chinese architecture.



Portsmouth Square restroom was in construction phase during the heavy rains of December. While this delayed the construction of the building shell, the team worked to meet the Chinese New Year festivities deadline, and the Year of the Goat brings improved facilities to Portsmouth Square.

## Program Summary

### **Waterfront Parks** highlights:

The Port received authority to issue \$33.5 million dollars to be expended on projects to improve waterfront open spaces. Highlights of these Port projects are described below.

- As of March 31, 2015, five of the 10 Port projects are substantially complete, including Pier 43 Bay Trail Link, Bayfront Park, Heron's Head Park, Brannan Street Wharf projects, and the Blue Greenway Planning & Design Guidelines.

### **Future Bond Sale Plans:**

- The fourth and final bond sale for the Port of San Francisco's waterfront park projects is anticipated for August or September 2015.

## Program Summary

### Program Background

- In February of 2008 the citizens of San Francisco passed Proposition A, a \$185 Million General Obligation Bond, known as the 2008 Clean and Safe Neighborhood Parks Bond.
- The \$185 million in bond funding is divided into two allocations based on the jurisdiction of the parks and facilities scheduled to receive funding, with \$151.3 million committed to the Recreation and Parks Department and \$33.5M dedicated to the San Francisco Port. \$185,000 is set aside in a Citizen's Oversight Audit fund.
- The objectives of this bond program are as follows: 1) Fix and improve park restrooms citywide; 2) Eliminate serious earthquake safety risks in neighborhood and waterfront park facilities; 3) Renovate parks and playgrounds in poor physical condition; 4) Replace dilapidated playfields; 5) Repair nature trail systems in the city's parks; and 6) Attract matching community and philanthropic support.
- The Recreation and Parks Department's 2008 Clean and Safe Neighborhood Parks Bond Program is divided into six sub-programs. The bulk of funding (80%) is dedicated to funding Major Capital Renovations at 12 Neighborhood Parks. The remaining funds (20%) are divided between five City- Wide programs.
  - Major capital renovation of Neighborhood Parks. The bond program allocates the majority of its funds to capital improvements at Neighborhood Parks across the city. These parks were selected based on the extent to which they are unsafe in an earthquake, in poor physical condition, as well as their ability to provide basic, recreational uses to many San Franciscans.
  - Restroom Repair and Replacement Program. Many of the city's park restrooms are in a state of severe dilapidation; some bathrooms require replacement, others require repairs, and some parks need restrooms. The \$11.4 million will fund a restroom replacement, repair, and installation program. Sites will be chosen in coordination with the community, through an open process guided by the Recreation and Parks Department Commission.
  - Park Playfield Repairs and Reconstruction. The City's playfields have been "loved to death"- overused due to a citywide shortage of soccer, baseball and multi-use fields. With the growing demand of field athletics, it is difficult to meet demand while keeping the fields at an acceptable playing condition. Over the past five years, a successful public/private partnership between the Recreation and Parks Department and the City Fields Foundation has resulted in the renovation of playfields at 6 park facilities with a current philanthropic contribution of over \$14 M. Each field has become some of the most requested play fields by park users. These renovated fields are improved by the installation of synthetic turf and night lighting which increased play time by more than 31,000 hours, while reducing maintenance needs and water demand. This \$8.5 million will continue that partnership.
  - Park Forestry Needs. Over 100,000 trees populate the city's parks and open spaces. These funds will provide for an assessment of the health and condition of this urban forest, as well as provide resources to enact the recommendations of the assessment and plant new trees.
  - Park Trail Reconstruction. The 2004 Recreation Assessment identified walking and biking trails as the #1 most needed recreational amenity; residents also cited hiking and visiting nature as the two activities in which they would like to participate in more often. The Park Trail Reconstruction program will restore trails and make capital improvements that allow residents to enjoy and experience nature in the parks.
  - Community Opportunity Fund (formerly Community Opportunity Grants Program). The Community Opportunity Fund Program is a capital program that allows residents, neighborhood groups and park advocates to initiate improvements in their parks by matching community-nominated capital projects with other private gifts and grants.

### Program Background

- The Port of San Francisco's Waterfront Parks program includes community planning efforts for the Blue Greenway and constituent parks, as well as new open space projects in the Northern Central Waterfronts. The program will add or improve seven open spaces and total \$33.5 million.

## Program Summary

### Program Budgets and Funding

- Budgets

#### Recreation and Parks Department:

Major Capital Program	
Chinese Recreation Center	14.2
Mission Playground	7.5
Palega Recreation Center	21.2
Cayuga Playground	7.3
McCoppin Square	5.3
Sunset Playground	13.7
Fulton Playground	4.2
Mission Dolores Park	13.2
Cabrillo Playground	4.5
Glen Canyon Park	5.8
Lafayette Park	10.2
Raymond Kimbell Playground	3.3
NP Contingency Funds	4.7

**Major NP Projects Program \$115.1M**

Citywide Programs	
Restroom Repair Program	11.4
Park Playfields Program	8.5
Park Forestry Program	4.0
Park Trail Program	5.0
Community Opportunity Fund	5.0

**Other Citywide Programs \$33.9M**

**Bond Issuance Costs<sup>1</sup> \$2.3**

**RPD Bond Program Total \$151.3M**

#### Port of San Francisco:

Major Capital Program	
Pier 43 Bay Trail Link	7.7
Brannan Street Wharf	2.9
Blue-Greenway Improvement	21.4
Blue-Greenway DS Standard	.2
CEQA Review & Permitting	.6
WP Bond Issuance Cost	.7

**Major WP Projects Program \$33.5M**

CGOBOC Audit Costs .2

**TOTAL Bond Program \$185.0M**

### Funding

Based on the adopted project budgets and schedules, a plan was developed to break funding into three sales. The strategy for sales is as follows:

- Sale 1 was completed in August 2008 to fund planning and design for the first 7 of 12 Major Capital projects (Phase I)<sup>2</sup>, Citywide Programs, and Waterfront Parks.
- Sale 2 was completed in early April 2010. Funds from this sale are intended for the construction of Phase I projects, Waterfront Parks, and Citywide Programs; and planning and design of the remaining five Major Capital projects (Phase II)<sup>2</sup>, Citywide Programs, and Waterfront Parks.
- Sale 3 funded construction of Waterfront Parks, and all remaining RecPark projects.
- Sale 4 will fund all Waterfront Park projects.
- The sale forecast developed for the projects managed by the Recreation and Parks Department and the San Francisco Port is as follows:

Sale	Date	Amount
1st Sale	8/2008	\$ 42,520,000
2nd Sale	4/2010	\$ 60,430,000
3rd Sale	2/2012	\$ 73,355,000
4 <sup>th</sup> Sale	Spring 2015	\$ 8,715,000
TOTAL		\$185,000,000

Distribution of the sale revenue between the agencies, and those budgeted for other bond related costs is outlined below. Other costs include the cost of bond issuance, bond oversight and program auditing.

Sale	SFRPD	SF Port	Other
1st Sale	\$38,457,502	\$3,644,438	\$418,060
2nd Sale	\$49,415,317	\$10,616,312	\$398,371
3rd Sale*	\$62,300,484	\$10,415,765	\$638,751
4 <sup>th</sup> Sale*	\$0	\$ 8,465,000	\$250,000

\* Other costs to be determined, therefore distribution is only conceptual.



## Project Status Summaries

- Major Neighborhood Park Phase I Projects:**

### Chinese Recreation Center

**Project Location:** 1101 Washington Street

**Project Manager:** Toks Ajike  
[toks.ajike@sfgov.org](mailto:toks.ajike@sfgov.org); (415) 581-2543

**Project Description:** Work at the Chinese Recreation Center included full replacement of the recreation center; repairs and renovation of the court and children's play area; restoration of existing pathways; upgrades to site infrastructure; improvements to accessibility and overall reconditioning of the park landscape. Construction is complete and this project was **Open to the Public in July 2012**.

#### **Project Schedule:**

	Start	Finish
Baseline/Original	Pre-2008	Sep 2010
Actual	Jun 2008	July 2012

#### **Project Budget**

Original Budget	\$20,704,394
Current Budget	\$19,394,221
Current Projected	\$19,394,221
Actual Expenditures	\$19,372,330



### Mission Playground

**Project Location:** 19<sup>th</sup> and Linda Street

**Project Manager:** Toks Ajike  
[toks.ajike@sfgov.org](mailto:toks.ajike@sfgov.org); (415) 581-2543

**Project Description:** The Mission Playground scope included renovated athletic courts; seismic upgrades to the clubhouse; renovated pathways; improvements to the swimming pool filter, site irrigation, and lighting; removal of ADA accessibility barriers; addition of shading devices and overall reconditioning of the park landscape. Additionally, through the generosity of the City Fields Foundation, the Mission Playground has a new synthetic soccer field. The original scope is complete and was Open to the Public September 15, 2012. A second phase, including repair to the pool building and systems, is now complete and was **Open to the Public in August 2013**.

#### **Project Schedule**

	Start	Finish
Baseline/Original	Aug 2008	May 2011
Actual	Mar 2009	Aug 2013

#### **Project Budget**

Original Budget	\$7,500,000
Current Budget	\$9,357,000
Current Projected	\$9,357,000
Actual Expenditures	\$9,320,437





## Project Status Summaries

### Palega Playground

**Project Location:** 500 Felton Street

**Project Manager:** Toks Ajike

[toks.ajike@sfgov.org](mailto:toks.ajike@sfgov.org); (415) 581-2543

**Project Description:** Renovation of the Palega Playground included repair and/or renovation of the recreation center, fields, courts, and children's play area; improvements to the pathway network; upgrades to the irrigation and lighting systems; modifications to the site to remove barriers and improve accessibility, and overall reconditioning of the park landscape. Project scope also included a building addition to meet the growing demands for indoor recreational space. The project is complete and was **Open to the Public in November 2013**.

#### **Project Schedule**

	Start	Finish
Baseline/Original	Aug 2008	May 2012
Actual	Jul 2009	October 2013

#### **Project Budget**

Original Budget	\$21,200,000
Current Budget	\$18,200,000
Current Projected	\$18,200,000
Actual Expenditures	\$17,346,266



### Cayuga Playground

**Project Location:** 1898 Cayuga Street

**Project Manager:** Marvin Yee;

[marvin.yee@sfgov.org](mailto:marvin.yee@sfgov.org); (415) 581-2541

**Project Description:** The project scope includes site reconfiguration; a new clubhouse, playground, and courts; and field renovation. Unique wooden sculptures found throughout the park have been inventoried and catalogued. BART is contributing \$1.355 million, which is the value to restore park features that will be impacted during BART's Emergency Safety Program (ESP) work in Cayuga Park. This project is complete and **Open to the Public in August 2013**.

#### **Project Schedule**

	Start	Finish
Baseline/Original	Aug 2008	May 2011
Actual	Feb 2009	July 2013

#### **Project Budget**

Original Budget	\$7,300,000
Current Budget	\$9,410,035
Current Projected	\$9,410,035
Actual Expenditures	\$9,369,977



## Project Status Summaries

### **McCoppin Square**

**Project Location:** 24<sup>th</sup> Avenue and Taraval Street

**Project Manager:** Meghan Tiernan;

[meghan.tiernan@sfgov.org](mailto:meghan.tiernan@sfgov.org); (415) 581-2557

**Project Description:** The project scope included relocation of children's play area, installation of new play equipment, renovation of athletic fields and tennis court; restoration of existing roads and pathways; upgrades to the irrigation and lighting systems; site modifications to remove barriers and improve ADA accessibility, overall reconditioning of the park landscape, and installation of a new restroom building. The project started construction in October 2010 and was **Open to the Public in October 2011**.

#### **Project Schedule**

	Start	Finish
Baseline/Original	Oct 2008	Jul 2011
Actual	Jan 2009	Oct 2011

#### **Project Budget**

Original Budget	\$5,300,000
Current Budget	\$3,800,000
Current Projected	\$3,800,000
Actual Expenditures	\$3,581,982



### **Sunset Playground**

**Project Location:** 2201 Lawton Street

**Project Manager:** Dan Mauer;

[dan.mauer@sfgov.org](mailto:dan.mauer@sfgov.org); (415) 581-2542

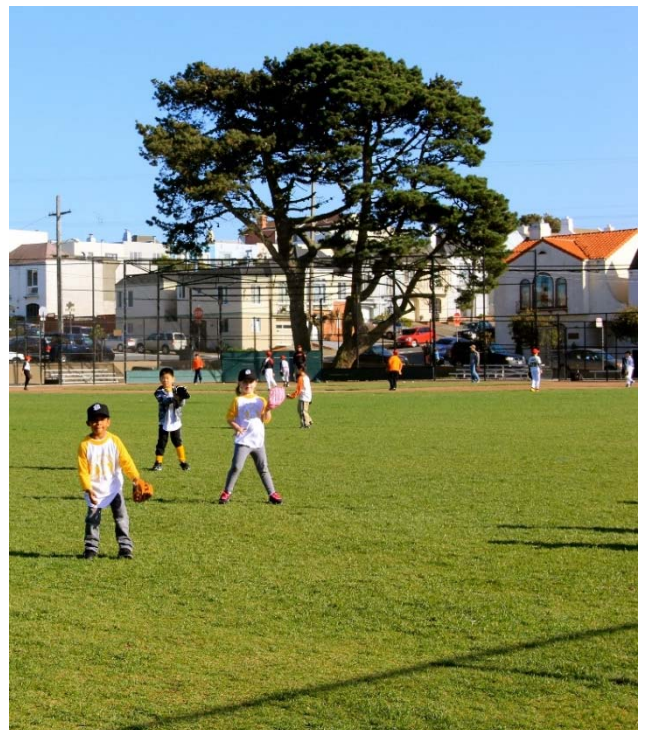
**Project Description:** The project scope included the repair and renovation of the recreation center/ gymnasium, children's play area, fields, and courts; restoration of existing pathways; upgrades to the irrigation and lighting systems; modifications to the site to remove barriers and improve accessibility, and overall reconditioning of the park landscape. Construction started in June 2011 and the renovated field opened on March 1, 2012. Remainder of the project is complete and was **Open to the Public in November 2012**.

#### **Project Schedule**

	Start	Finish
Baseline/Original	Aug 2008	Jan 2012
Actual	Feb 2009	Nov 2012

#### **Project Budget**

Original Budget	\$13,700,000
Current Budget	\$13,915,069
Current Projected	\$13,915,069
Actual Expenditures	\$13,782,851





## Project Status Summaries

### **Fulton Playground**

**Project Location:** 855 27<sup>th</sup> Avenue

**Project Manager:** Pauline Araica;

[pauline.araica@sfgov.org](mailto:pauline.araica@sfgov.org); (415) 581-2558

**Project Description:** Fulton Playground project included the rehabilitation of the clubhouse (which has been designated a historical resource by the Planning Department), renovation of the children's play areas and sport courts, and site improvements. The project is complete and was **Open to the Public in October 2012**.

#### **Project Schedule**

	Start	Finish
Baseline/Original	Aug 2008	Jan 2011
Actual	Feb 2009	Oct 2012

#### **Project Budget**

Original Budget	\$4,200,000
Current Budget	\$4,935,000
Current Projected	\$4,935,000
Actual Expenditures	\$4,931,662



### **Mission Dolores Park – Helen Diller Playground**

**Project Location:** Dolores Street and 19<sup>th</sup> Avenue

**Project Manager:** Mary Hobson;

[mary.hobson@sfgov.org](mailto:mary.hobson@sfgov.org); (415) 581-2575

**Project Description:** The Recreation and Parks Department collaborated with the Friends of Dolores Park Playground and the Urban Resource Systems, Inc. in the total renovation of the play area. Additionally, RPD partnered with the Mercer Foundation and Friends of Dolores Park Playground for a generous donation of \$1.5 million to fund the project. The playground is complete and was **Open to the Public in March 2012**.

	Start	Finish
Baseline/Original	Dec 2007	Apr 2010
Actual	Jan 2008	Mar 2012

#### **Project Schedule**

#### **Project Budget**

Original Budget	\$3,250,000
Current Budget	\$3,550,167
Current Projected	\$3,550,167
Actual Expenditures	\$3,550,167



## Project Status Summaries

### **Mission Dolores Park Renovation**

**Project Location:** Dolores Street and 19<sup>th</sup> Avenue

**Project Manager:** Jake Gilchrist;

[jacob.gilchrist@sfgov.org](mailto:jacob.gilchrist@sfgov.org); (415) 581-2561

**Project Description:** Currently in the Construction phase on the northern half of the site, called Phase 1, the full project scope includes the replacement and/or renovation of the clubhouse, restrooms, picnic area, sport courts, pathways, irrigation, drainage, lighting, and landscape planting. Completion has been delayed due to finding of ground water, site reinforcement and related remediation, completion expected in Spring 2015. Recent vandalism, effecting sod that was recently planted, is slightly delaying the north side completion. South side construction will start in late Spring, and all construction finishing in late fall 2015. .

#### **Project Schedule**

	Start	Finish
Baseline/Original	Oct 2009	Mar 2013
Actual	May 2010	Jan 2016

#### **Project Budget**

Original Budget	\$11,700,000
Current Budget	\$19,687,175
Current Projected	\$19,687,175
Actual Expenditures	\$15,714,675



### **Cabrillo Playground**

**Project Location:** 855 27<sup>th</sup> Avenue

**Project Manager:** Pauline Araica;

[pauline.araica@sfgov.org](mailto:pauline.araica@sfgov.org); (415) 581-2558

**Project Description:** Cabrillo Playground project includes the repair and/or renovation of the clubhouse, children's play area, picnic areas, sport courts, upgrades to infrastructure, accessibility improvements, and overall reconditioning of the park landscape. The project is complete and was **Open to the Public in August 2013**.

#### **Project Schedule**

	Start	Finish
Baseline/Original	Oct 2009	Aug 2012
Actual	Jun 2010	August 2013

#### **Project Budget**

Original Budget	\$4,500,000
Current Budget	\$4,546,591
Current Projected	\$4,546,591
Actual Expenditures	\$4,531,710





## Project Status Summaries

### Glen Canyon Park

**Project Location:** Elk Street and O'Shaughnessy Blvd.

**Project Manager:** Karen Mauney-Brodek;

[karen.mauney-brodek@sfgov.org](mailto:karen.mauney-brodek@sfgov.org); (415) 575-5601

**Project Description:** RPD partnered with the Trust for Public Land and through an extensive outreach process redesigned and renovated to promote the park's natural features and provided a new, larger playground, new tennis courts, improved pedestrian amenities including new entry paths, a direct canyon access trail and ADA compliant access. The project is complete and Opened to the Public February 22, 2014.

Project Schedule	Start	Finish
Baseline/Original	Oct 2009	Jan 2013
Actual	May 2010	February 2014



### **Project Budget**

Original Budget	\$5,800,000
Current Budget	\$6,191,000
Current Projected	\$6,191,000
Actual Expenditures	\$6,089,356

### Lafayette Park

**Project Location:** Gough Street at Washington Street

**Project Manager:** Mary Hobson

[mary.hobson@sfgov.org](mailto:mary.hobson@sfgov.org); (415) 581-2575

**Project Description:** The project scope will include the renovation the children's play area, restroom, picnic area, and courts; restoration of roads and pathways; upgrades to the infrastructure including lighting and irrigation, modifications to the site to remove barriers and improve accessibility, and overall reconditioning of the park landscape. The project is complete and was **Open to the Public in June 2013**.

### **Project Schedule**

	Start	Finish
Baseline/Original	Dec 2009	May 2013
Actual	Jun 2010	June 2013

### **Project Budget**

Original Budget	\$10,200,000
Current Budget	\$10,400,000
Current Projected	\$10,400,000
Actual Expenditures	\$10,394,110



## Project Status Summaries

### **Raymond Kimbell Playground**

**Project Location:** Geary Blvd. and Steiner Street

**Project Manager:** Marien Coss

[Marien.coss@sfgov.org](mailto:Marien.coss@sfgov.org); (415) 581-2542

**Project Description:** Project Construction is almost complete - replacing the clubhouse, installing improved interior lighting, new fencing, the new Children's Play Area is in place, with new equipment, safety surfacing, and a play area for teens, with an exercise area and conversion of the original play area into a basketball court. The project has also made meadow improvements, tree evaluation, and improvements to baseball bleachers, landscape and access improvements.



### **Project Schedule**

	Start	Finish
Baseline/Original	Feb 2010	Nov 2012
Actual	Jul 2010	June 2015

### **Project Budget**

Original Budget	\$3,300,000
Current Budget	\$4,100,000
Current Projected	\$4,100,000
Actual Expenditures	\$3,182,851

## Project Status Summaries

### Citywide Programs

#### Restroom Repair And Replacement Program

**Project Manager:** Marvin Yee

[marvin.yee@sfgov.org](mailto:marvin.yee@sfgov.org); (415) 581-2541

The Restroom Repair and Replacement program funds the construction, repair, and renovation of restroom facilities. Many of the city park's restrooms are old, needed repair, and are poorly designed for maintenance and proper supervision. Per the 2008 Bond Report, the Recreation & Parks Commission appointed a Restroom Taskforce to work with staff and the community to develop recommendations for which restrooms should be renovated, replaced or added. The Restroom Taskforce developed a plan to renovate or replace 18-21 restrooms, depending on costs. To date, 16 restrooms are complete and Open to the Public, one is in construction, and two in planning or design.



#### Park Playfields Repair And Reconstruction Program



**Project Manager:** Dan Mauer

[dan.mauer@sfgov.org](mailto:dan.mauer@sfgov.org); (415) 581-2542

The Playfields Initiative is a public-private partnership between the City Fields Foundation and the Recreation and Parks Department. The goal of the program is to address the chronic shortage of athletic fields in San Francisco and equitably provide sports facilities for youth and adult leagues, school teams, physical education classes and informal neighborhood play. To date, the program has renovated 9 parks, increasing the overall play hours in excess of 76,000 hours.

Using a new generation of synthetic turf, select athletic fields across the City have been completely overhauled with field drainage, goals and backstops/fencing, bleachers, garbage cans, signage, and field lights. Most recently, the athletics fields at Minnie Lovie Recreation Center were completed, and have added an estimated thousands of play hours.

The 2008 Clean and Safe Neighborhood Parks Bond will provide \$8.5 million in funding which has been matched with private dollars to renovate the four athletic fields at the Beach Chalet in Golden Gate Park. Construction at the Beach Chalet began in November 2014 and is scheduled to complete in fall 2015. The overall philanthropic funding match for this program is 1 to 1 with a current expended gift of over \$14 million to date.



## Project Status Summaries

### Park Forestry Program

**Project Manager:** TBD

The Recreation & Park Department's forest is estimated to contain roughly 131,000 trees. It has not received major physical attention since the original planting. Though one of the most important elements of our urban parks is the trees, the first a thorough assessment and plan for the care, repair and planting of new trees was funded in the 2008 Bond..

Under this program, the Recreation and Park Department engaged forestry professionals to identify sites that pose the greatest potential of tree failure. Using data for facility usage and tree failure history, the forestry team created a prioritized list for all RPD facilities that was reviewed and approved by the Recreation and Parks Commission in February 2010. The bond program will initially address the highest priority sites. The scope includes assessing trees with accepted urban forestry techniques such as the hazard rating system, and packaging tree pruning and removal work into contracts for public bid.



### Park Trail Reconstruction Program

**Project Manager:** Melinda Stockmann

[melinda.stockmann@sfgov.org](mailto:melinda.stockmann@sfgov.org); (415) 581-2548



Nature trails in San Francisco's parks are in poor shape – frequently in need of erosion control and other improvements to the condition of the surrounding landscape. 2008 Clean and Safe NP Bond funds will improve access and opportunities to walk and hike, allowing residents to better enjoy and experience nature and vistas in San Francisco parks. RPD staff worked with PROSAC and received Commission approval for 10 sites in June 2009. To date, work has been completed in 4 projects, including Glen Canyon and continues on 6 other sites including Bayview Park, Bernal Heights Park, McLaren park, Mt. Davidson, Oak Woodlands (GGP), and Twin Peaks. Twin Peaks trails will be benefiting from a repaving project led by SFMTA; while project scope will not change, overall accessibility and safety will be improved through revised vehicular traffic at the peaks. Bernal Heights trails are currently receiving construction bids, and construction should start in Summer 2015

**Glen Canyon Creeks to Peaks Trail - during Greater Greener Conference Tour, April 2015**



## Project Status Summaries

### **Community Opportunity Fund Program**

**Project Manager:** Jake Gilchrist

[jacob.gilchrist@sfgov.org](mailto:jacob.gilchrist@sfgov.org); (415) 581-2561

The Community Opportunity Fund Program provides neighborhoods, community groups and people who love and care for their parks an opportunity to receive improvements for a Recreation & Parks Department park they nominate. The program promotes increased stewardship of parks by encouraging volunteer and fundraising partnerships. The 2008 program was separated into 3 application and award rounds. Round 1 of the Community Opportunity Fund began in late June 2010, Round 2 in March 2011, and Round 3 March 2012. All COF awards have now been completed, and new applicants are directed to the 2012 Bond COF Program. Round 4 applications were received in April 2014 and initially approved, subject to constructability review, in Fall 2014. This and subsequent rounds are funded under the 2012 GO Bond and will be reported there.



**Golden Gate Park SF Lawn Bowling**

Completed in Winter 2015

## Project Schedules

### Major Waterfront Park Projects

#### **Pier 43 Bay Trail Link: *SUBSTANTIALLY COMPLETE***

**Project Location:** Powell to Taylor Streets – Embarcadero

**Project Manager:** Steven Reel, [steven.reel@sfpport.org](mailto:steven.reel@sfpport.org); (415) 274-0574

Located along the Bay north of the Pier 43 Arch, the site previously consisted of condemned piers and partially closed sidewalk due to a failing seawall. The project created a new waterfront open space destination featuring a public promenade along the water's edge. The project removed 70,000 SF of pier, replaced 520 linear feet of seawall, constructed 20,600 SF of pile supported concrete wharf, and reconstructed sidewalks, curbs and gutters.

During the entitlement process, scope was added to the project for additional wharf area (requested by the Bay Conservation and Development Commission, or BCDC), for ADA improvements near Pier 45, and for security lighting. The additional scope caused a delay of 1 month and increased the estimated cost by \$2 M. To fund the additional scope, Port used capital funds and grants from the Association of Bay Area Governments (ABAG) and the Federal Department of Homeland Security (DHS).

This Project is complete and open to the public.



Budget	GO Bond	Total Funds
Original Budget	\$7,677,800	\$7,808,263
Current Approved Budget	\$7,677,800	\$10,191,508
Actual Expenditures To Date	\$7,587,499	\$9,921,768

Schedule	Planning	Design	Construction	Completion
Original	March 2008	November 2009	January 2011	June 2012
Current Forecast or Actual	July 2008	December 2009	July 2011	November 2012

## Project Schedules

### **Brannan Street Wharf: *SUBSTANTIALLY COMPLETE***

**Project Location:** Embarcadero at Brannan Street

**Project Manager:** Steven Reel, [steven.reel@sfport.org](mailto:steven.reel@sfport.org); (415) 274-0574

Located along the Bay in the South Beach neighborhood, the project created a 57,000 SF public open space wharf along approximately 850 linear feet of waterfront which was previously inaccessible due to condemned wharf and pier structures. Features, as recommended by a citizen's advisory committee, include a raised lawn, public float, seating, and interpretive exhibits.

Preliminary engineering studies indicated the need for unexpected repairs and strengthening of a portion of the existing seawall; revealed deteriorated structure supporting a portion of The Embarcadero Promenade; uncovered ground instability within the new wharf area; and identified complexity in the removal of the existing Pier 36 caissons. Recognizing a funding shortfall, the Port was successful in obtaining \$4.7M of federal funds specifically for pier removal. The funding required pier removal to be delivered as a separate project lead by the US Army Corps of Engineers and triggered additional environmental review (NEPA) resulting in a 1 year schedule delay.

Even with the additional funding, the public float had to be excluded from the project to resolve the budget deficit.

Construction of the wharf commenced in December 2011. The wharf is substantially complete and open to the public.



Budget	GO Bond	Total Funds
Original Budget	\$2,941,050	\$20,544,030
Current Approved Budget	\$2,941,050	\$26,246,271
Actual Expenditures To Date	\$2,941,050	\$24,908,683

Schedule	Planning	Design	Construction	Completion
Original	January 2008	July 2009	September 2010	August 2012
Current Forecast or Actual	July 2008	October 2009	December 2011	July 2013

## Project Schedules

### **Blue Greenway Planning & Design Guidelines: COMPLETE**

**Project Location:** The Southern Waterfront, running from Mission Creek to Pier 98

**Project Manager:** David Beaupre, [david.beaupre@sport.org](mailto:david.beaupre@sport.org); (415) 274-0539

The Blue-Greenway Design standards evolved through the community planning process to be more than just design guidelines. Stakeholders, the Port Commission and City agency partners agreed that to be more useful, the process and results required more planning to understand the opportunities along the entire Blue Greenway. However, as the scope was refined, it was determined that it would be difficult to develop design standards without a better understanding of the entire scope of potential projects within the Blue-Greenway. Therefore the planning process was expanded to include the identification of open space opportunities, identification of programming (uses) options, project cost estimates and the development of an implementation strategy to improve the Blue Greenway, including project prioritization. The Guidelines were completed in July 2012



Budget	GO Bond	Other Funds	Total Funds
Original Budget*	\$2,533,250	\$0	\$2,533,250
Current Approved Budget	\$325,472	\$0	\$325,472
Actual Expenditures To Date	\$325,472	\$0	\$325,472

Schedule	Planning	Design	Construction	Completion
Original	March 2008	N/A	N/A	August 2009
Current Forecast or Actual	May 2008	N/A	N/A	July 2012

\* The original budget for this project included funding for signage and site furnishings; however, these elements have since been separated into a new project called "Blue Greenway Signage and Site Furnishings" with a distinct budget and schedule.



## Project Schedules

### **Bayfront Park: SUBSTANTIALLY COMPLETE**

**Project Location:** Terry A. Francois Street, between South Street and Mariposa

**Project Manager:** David Beaupre, [david.beaupre@sfport.org](mailto:david.beaupre@sfport.org); (415) 274-0539

This project along the Blue Greenway included the removal of deteriorated piers and wharves, and reconstruction of 1,200 linear feet of shoreline to allow Bayfront Park to be constructed to the Bay's edge. The shoreline project included the installation of a temporary 8' wide mixed use pathway to allow the public to access the shoreline while the Park was under construction. This project is complete and opened to the public in February of 2012.



Budget	GO Bond	Total Funds
Original Budget	\$2,950,000	\$2,950,000
Current Approved Budget	\$2,950,000	\$2,950,000
Actual Expenditures To Date	\$2,330,367	\$2,330,367

Schedule	Planning	Design	Construction	Completion
Original	January 2008	January 2009	March 2010	February 2011
Current Forecast or Actual	January 2008	January 2009	September 2011	February 2012

## Project Schedules

### **Heron's Head Park: *SUBSTANTIALLY COMPLETE***

**Project Location:** Jennings Street and Cargo Way

**Project Manager:** David Beaupre, [david.beaupre@sport.org](mailto:david.beaupre@sport.org); (415) 274-0539

This Blue Greenway project included an expansion of the existing Heron's Head Park by approximately an acre, by: a) converting a paved area into a meadow, and planter areas; b) organizing the service and parking areas; c) creating a dog run; d) installing picnic tables and seating areas, new lighting and bicycle amenities; e) adding park signage; f) including new sites for public art; g) creating a defined pedestrian circulation area; and h) adding a landscape based storm-water treatment system. The design is consistent with the sustainable natural theme of the existing park.

The original budget established was based upon a smaller park opportunity site, in preparing the design and working through the community review process the project site was enlarged. The GO Bond funding strategy for Blue Greenway Parks accommodated opportunity for projects to expand or consolidate through the planning process. This project was completed and opened to the public in September 2012.



Budget	GO Bond	Total Funds
Original Budget	\$550,000	\$550,000
Current Approved Budget	\$2,351,000	\$2,403,949
Actual Expenditures To Date	\$2,351,000	\$2,397,861

Schedule	Planning	Design	Construction	Completion
Original	January 2009	October 2009	December 2010	May 2011
Current Forecast or Actual	January 2009	March 2010	December 2011	September 2012

## Project Schedules

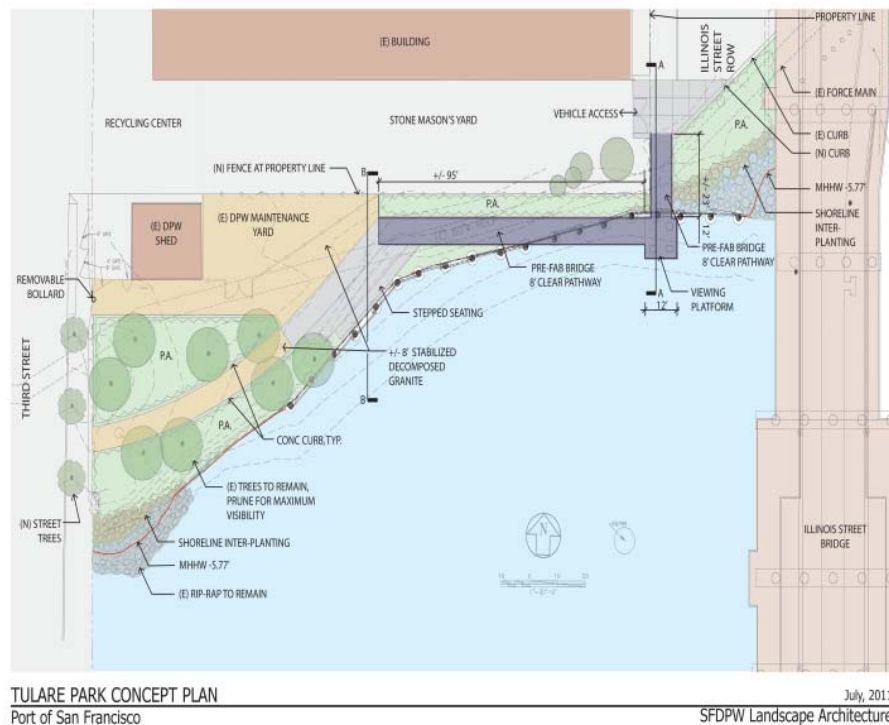
### **Tulare Park – POSTPONED INDEFINITELY**

**Project Location:** Islais Creek shoreline, north side between Illinois and Third Streets

**Project Manager:** David Beaupre, [david.beaupre@sfpport.org](mailto:david.beaupre@sfpport.org); (415) 274-0539

Across Islais Creek from the future site of the Bayview Gateway, Tulare Park is an existing Blue Greenway Park that was originally constructed in the early 1970s and is in need of major improvements including upgrades required under the Americans with Disabilities Act (ADA). During final design of the Tulare Park improvements, it was determined that grading required to create the ADA accessible path would pose significant risk of damage to both the San Francisco Public Utilities Commission force main and the existing retaining wall running throughout the site. After studying alternatives, a pedestrian bridge was chosen as the most cost effective solution to create an accessible pathway.

***This project was bid and was not awarded because the bid exceeded the budget by over a \$600,000 The Port is working with both DPW and the SFPUC on alternative design ideas that are more cost effective and accommodate the PUC sub-surface infrastructure and access requirements.***



Budget	GO Bond	Other Funds	Total Funds
Original Budget	\$585,000	\$275,000	\$860,000
Current Approved Budget	\$1,029,625	\$0	\$1,029,625
Actual Expenditures To Date	\$330,567	\$0	\$330,567

Schedule	Planning	Design	Construction	Completion
Original	April 2011	October 2012	October 2012	December 2013
Current Forecast or Actual	April 2011	October 2012	<b><i>Pending review</i></b>	<b><i>Pending review</i></b>

## Project Schedules

### **Blue Greenway Public Art**

**Project Location:** Blue Greenway Mission Creek and Heron's Park

**Project Manager:** David Beaupre, [david.beaupre@sfport.org](mailto:david.beaupre@sfport.org); (415) 274-0539

Working with the SF Arts Commission, the Port identified the Bayview Gateway site as the appropriate site and location for the Port's Art Enrichment Project.

The SF Arts Commission released a call for artist to submit qualifications for the project in the fall of 2014 and expects to select 3 artists to submit proposals. The final artist will be selected in the summer of 2014 with fabrication and installation to begin in late 2014.

Budget	GO Bond	Total Funds
Original Budget	\$684,000	\$684,000
Current Approved Budget	\$684,000	\$684,000
Actual Expenditures To Date	\$27,057	\$27,057



Schedule	Planning	Design	Construction	Completion
Original	April 2011	March 2012	May 2013	August 2013
Current Forecast or Actual	July 2011	February 2014	October 2014	June 2015



## Project Schedules

### **Crane Cove Park**

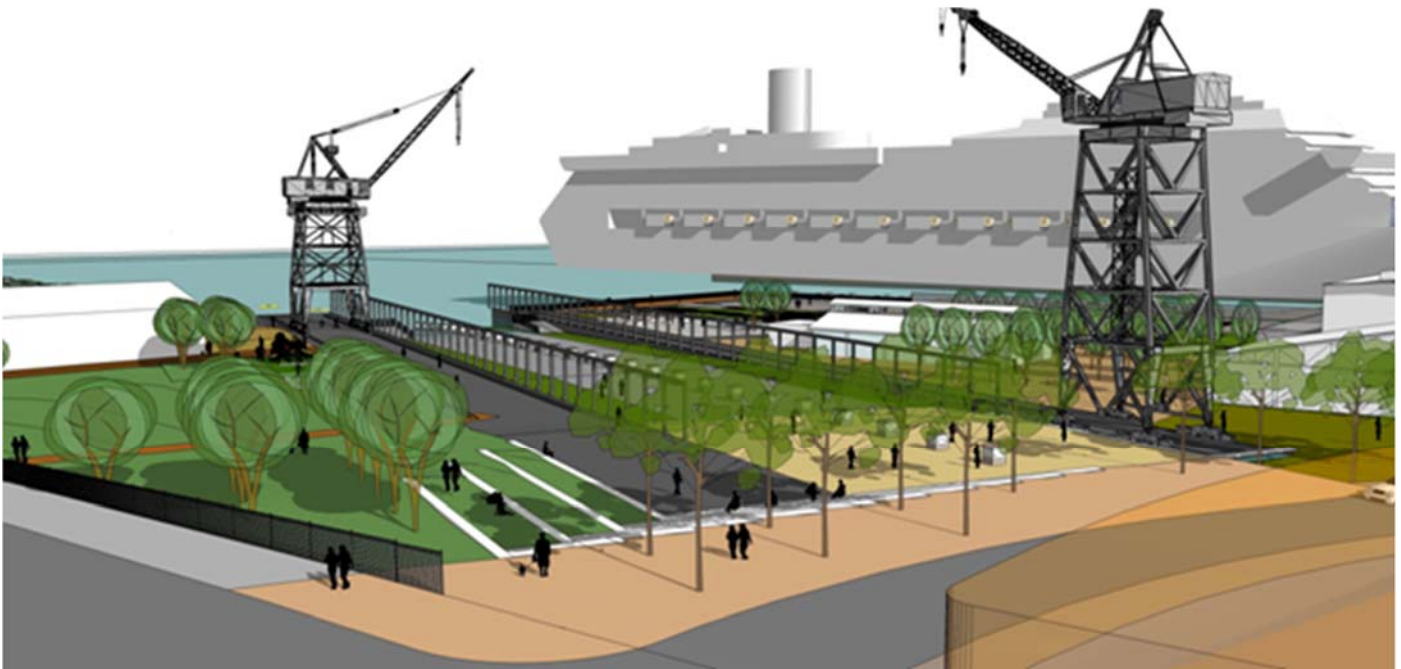
**Project Location:** Nineteenth and Illinois Street

**Project Manager:** David Beaupre, [david.beaupre@sfport.org](mailto:david.beaupre@sfport.org); (415) 274-0539

Crane Cove Park is an approximately 9 acre Blue Greenway waterfront park located in the Central Waterfront generally between 19<sup>th</sup> and Mariposa Streets east of Illinois Street. Initial park concepts include shoreline cleanup and stabilization, restoration of historic cranes, historic interpretation, bay access, and a facility for human powered boats. The total cost for the entire project is expected to be \$45 million dollars, which is greater than the current available funding. As a result, the project will be phased as funding is secured. Available funding for the 1<sup>st</sup> phase of the project is \$21,324,148 million, including (a) 10,024,148 in 2008 Clean and Safe Neighborhood Park G.O. Bonds, (b) \$8,000,000 from 2012 Clean and Safe Neighborhood Parks G.O. Bonds, and (c) \$3,300,000 in other Port funds.

This Blue Greenway Project benefits from significant planning conducted through the development of the Port's Pier 70 Preferred Master Plan and the Blue Greenway Planning and Design Guidelines community planning process.

A draft Park Master plan was reviewed with the Port Commission and Port's Waterfront Design Review Board in December of 2012 and January, June, September, and December of 2013. The Port has created a web site to allow the public to review work products and track the project status at [www.sfport.com/cranecovepark](http://www.sfport.com/cranecovepark).



Budget	GO Bond	Total Funds
Original Budget	\$10,024,148	\$11,124,148
Current Approved Budget	\$10,024,148	\$21,324,148
Actual Expenditures To Date	\$604,602	\$604,602

Schedule	Planning	Design	Construction	Completion
Original	September 2011	March 2013	February 2014	February 2015
Current Forecast or Actual	September 2011	December 2014	January 2016	May 2017

## Project Schedules

### Blue Greenway Signage and Site Furnishings

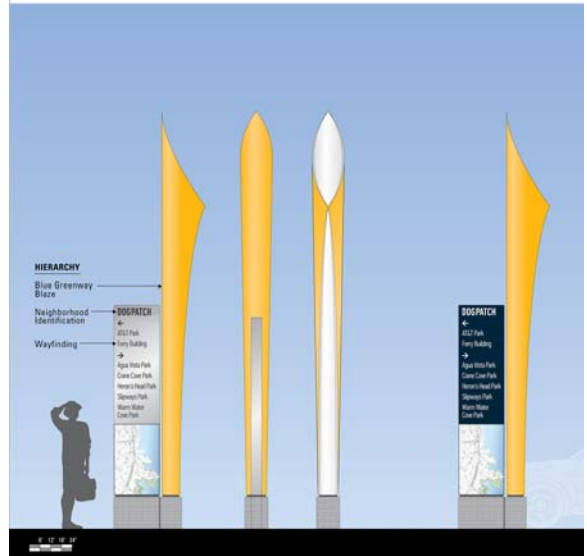
**Project Location:** Blue Greenway Linking Streets between Mission Creek and Heron's Head Park

**Project Manager:** David Beaupre, [david.beaupre@sfport.org](mailto:david.beaupre@sfport.org); (415) 274-274-0539

The Blue Greenway is the City's project to improve the City's southerly portion of the 500 mile, 9-county, region-wide Bay Trail. Uniquely, the trail does not follow one continuous waterfront path or have consistent water views to serve as a navigational tool for users; users have to consciously find transitions and make decisions in order to stay on the system. Additionally, because the Blue Greenway is in its early inception, it lacks recognition by the general public. In order to help build identity and allow users to find their way along the system, the Port, working with our stakeholders, has developed a signage and way-finding program to build identity and provide users orientation to find their way along the system. The program includes large customized signs (as conceptualized in the diagram) which include navigational information.

The contract to construct and install these custom signs went out to bid in late March 2013 and a contract was awarded with Port Commission approval. In addition to signage, furnishings such as benches and waste receptacles will be provided at the sign sites where practicable.

This Project went out to bid in late March 2013, the Port commission approved the award of the bid and the signage portion of the project will be substantially completed by April 2014, with the remaining minor site improvements completed in Sept 2014.



Budget	GO Bond	Other Funds	Total Funds
Original Budget	\$434,000	n/a	\$434,000
Current Approved Budget	\$998,911	\$0	\$998,911
Actual Expenditures To Date	\$485,431	\$0	\$485,431

Schedule	Planning	Design	Construction	Completion
Original	June 2011	January 2012	January 2013	August 2013
Current Forecast or Actual	April 2011	January 2012	June 2013	September 2014

## Project Schedules

### Bayview Gateway

**Project Location:** Islais Creek shoreline, south side between Illinois and Third Streets

**Project Managers:** David Beaupre, [david.beaupre@sfport.org](mailto:david.beaupre@sfport.org); (415) 274-0539 (Planning)  
Steven Reel, [steven.reel@sfport.org](mailto:steven.reel@sfport.org); (415) 274-0574 (Engineering)

The Bayview Gateway Project will create a new one acre public open space along the southern bank of Islais Creek in San Francisco's southeast waterfront. The project site is bound by Islais Creek on the north, Cargo Way on the south, 3rd Street on the west, and Illinois Street on the east. This area was reclaimed from the Bay in the 1900s and served as a working waterfront with a timber wharf and shed. The shed was removed in the early 1980s leaving an asphalt covered lot. The project will demolish the existing timber wharf, rehabilitate the seawall, and transform the asphalt lot into a public park with walkways, plaza spaces and green spaces from which to enjoy the Bay. In addition, the project will serve as both a gateway to and an amenity for the Bayview neighborhood.

Construction estimates early in the design phase indicated the project would cost 13% more than the current budget. Value engineering measures were taken to simplify the design with some success. However, additional project scope was added for unanticipated right of way improvements including a new crosswalk at 3rd Street, modifications and repairs to the adjacent sidewalks, and more extensive roadway and traffic signal work at 3rd Street and Cargo Way.

**Construction quotes for the proposed Bayview Gateway and Tulare Park projects were significantly beyond the existing budgets for each project. The Port is currently pursuing strategies to redirect the Tulare Park funding to the higher priority Bayview Gateway project, subject to Board of Supervisors approval. The approved budget shown below will be updated after the appropriate approvals have been granted.**



Budget	GO Bond	Other Funds	Total Funds
Original Budget	\$3,282,125	\$0	\$3,282,125
Current Approved Budget	\$3,926,750	\$0	\$3,926,750
Actual Expenditures To Date	\$347,922	\$0	\$347,922

Schedule	Planning	Design	Construction	Completion
Original	September 2011	March 2012	October 2012	August 2013
Current Forecast or Actual	September 2011	March 2012	August 2014	May 2015